

# CORMACH



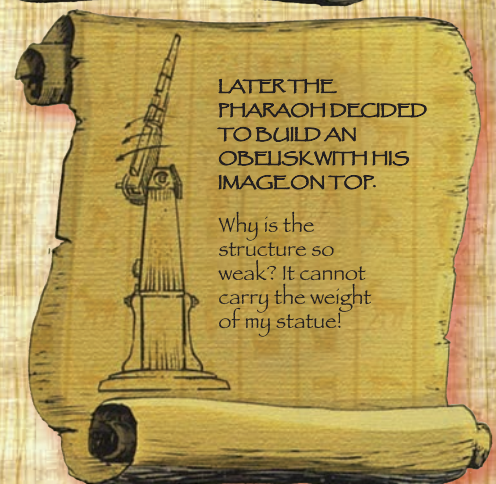
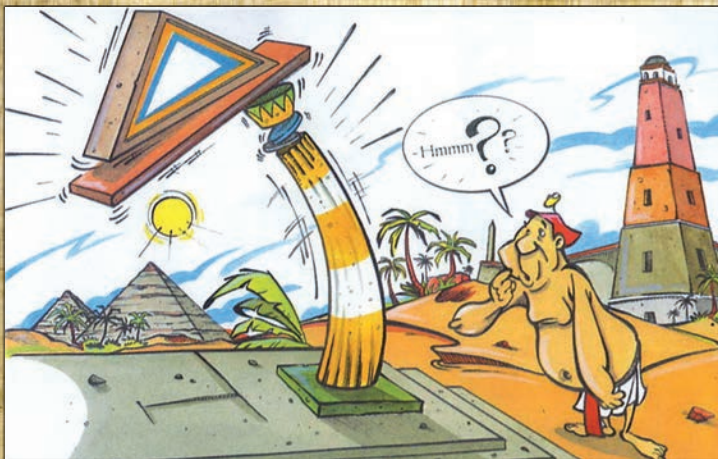
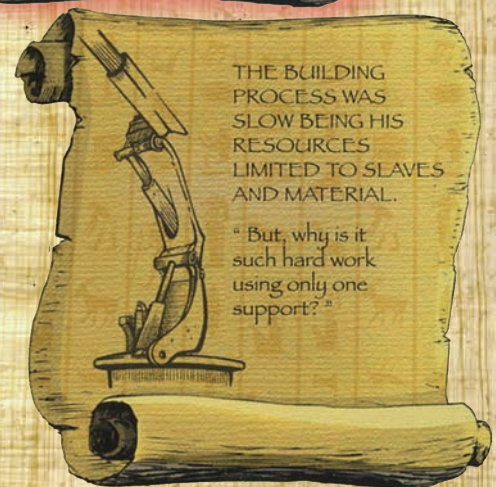
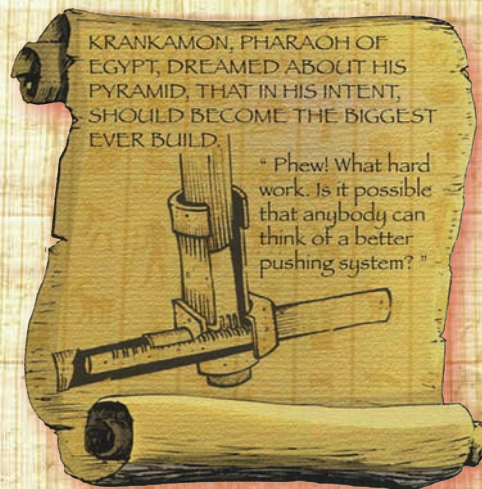
**27500 E**  
**A.S.C. plus**



[www.cormach.com](http://www.cormach.com)

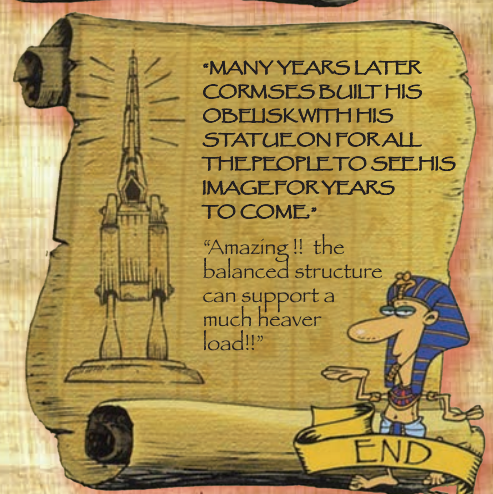
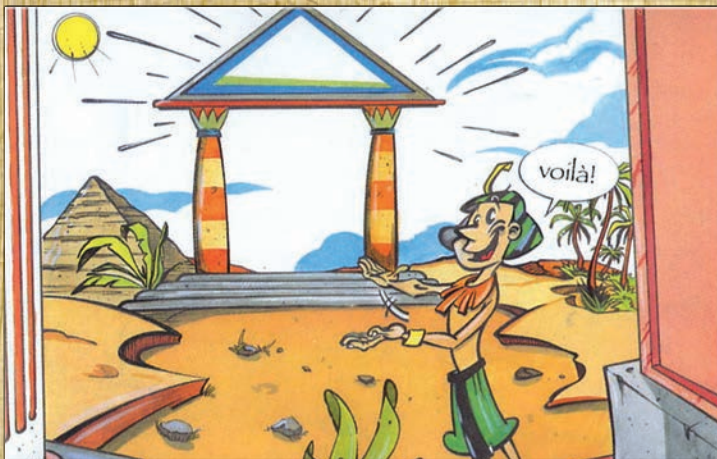
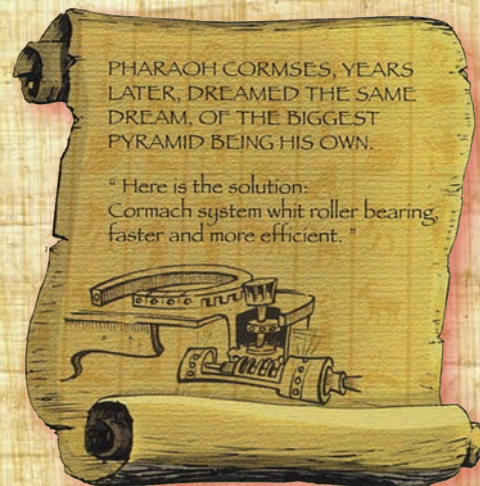


# ... ABOUT ANCIENT

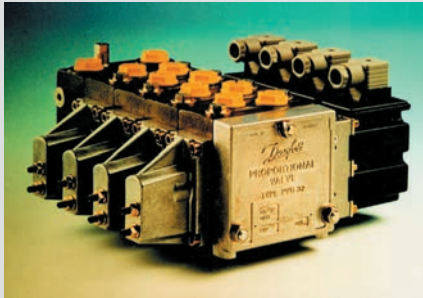




# EGYPT MANUSCRIPTS







Radiocomando con distributore proporzionale.  
*Radio remote control with proportional control bank.*  
 Radiocommande avec distributeur proportionnelle.  
 Funkfernsteuerung mit proportional Steuerventil.



Comandi accessibili da terra. Tutti i carter in acciaio inox AISI 304.  
*Controls can be reached standing on the side. All the carter are in stainless steel AISI 304.*  
 Commandes accessibles de terre. Tous les carter sont en acier inox AISI 304.  
 Von der Seite steuerbar. schutzplatten in Edelstahl AISI 304.



Verricello (OPZIONE).  
*Winch (OPTIONAL).*  
 Treuil (OPTION).  
 Winde (Auf Frage).

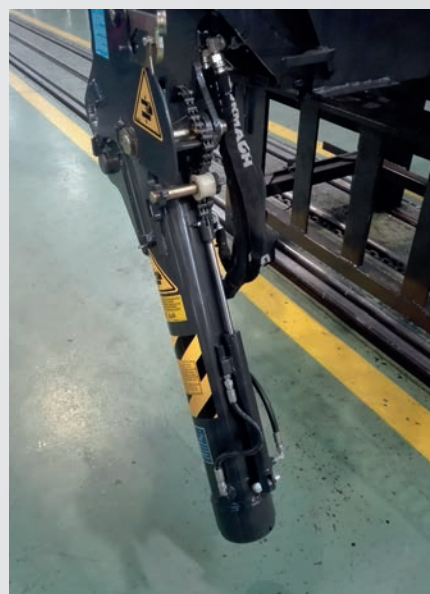




# 27500 E A.S.C. plus



Scambiatore di calore.  
Heat exchanger.  
Echangeur de chaleur.  
Ölkühler.



Cilindro stabilizzatore ribaltabile 180° (OPZIONE).  
180 degrees tilting stabilising cylinder (OPTIONAL).  
Cylindre stabilisateur escamotable 180 degrés (OPTION).  
Stützylinder kann 180° umgekippt werden (auf Frage).



# 27500 E A.S.C. plus



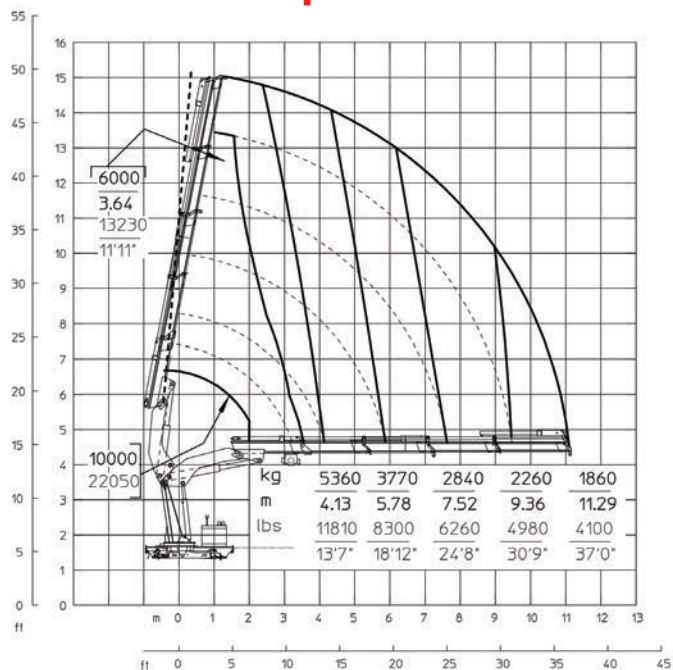






# 27500 E A.S.C. plus

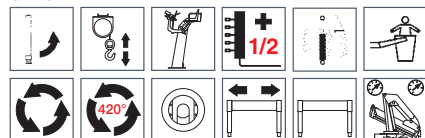
## 27500 E4 A.S.C. plus



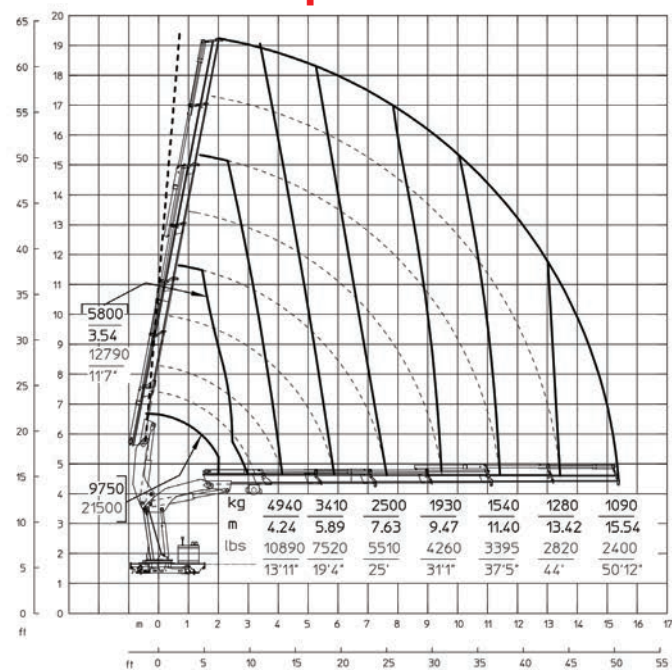
### STANDARD



### OPTIONAL



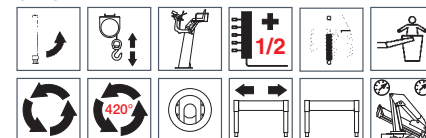
## 27500 E6 A.S.C. plus



### STANDARD



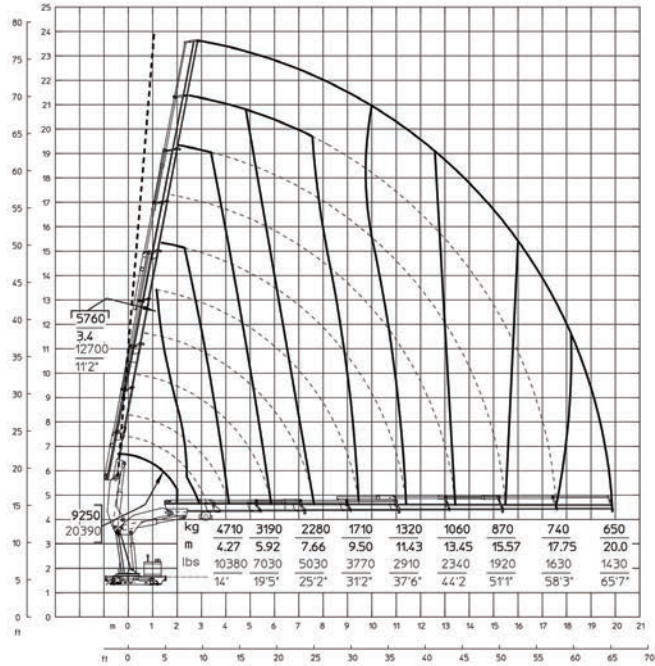
### OPTIONAL



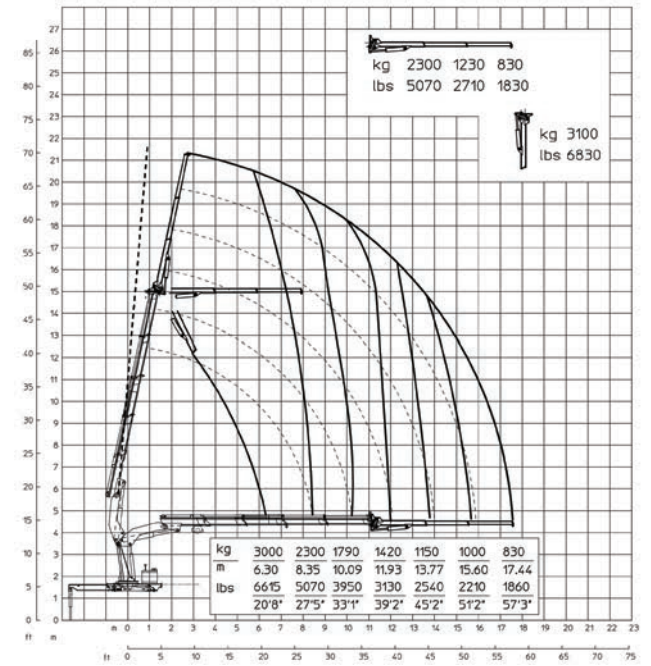
E4	E4		E6	E6
28000 da N*m	202560 Lb*ft	Momento statico massimo al perno torretta • Max. static moment at the turret pin Moment statique max. a l'axe de la tourelle • Max. statisches ubmoment am kranseulenbolzen	28000 da N*m	202560 Lb*ft
11.3 m	37' 1" ft	Sbraccio idraulico • Hydraulic boom length Longueur du bras hydraulique • Hydraulic reichweite	15.54 m	50' 12" ft
2800 da N*m	20260 Lb*ft	Coppia di rotazione • Slew torque • Moment de rotation • Drehmoment	2800 da N*m	20260 Lb*ft
sec. 40 - 360°	sec. 40 - 360°	Tempo di rotazione • Slewing speed • Temp de rotation • Schwenkgeschwindigkeit	sec. 40 - 360°	sec. 40 - 360°
1750+1750 mm	5' 9" + 5' 9" ft	Uscita stabilizzatori (*) • Outriggers extensions (*) Sortie des bequilles (*) • Breite der abstützung (*)	1750+1750 mm	5' 9" + 5' 9" ft
5838 mm	19' 2" ft	Larghezza stabilizzatori (**) • Outriggers width (**) Largeur des bequilles (**) • Breite der abstützung (**)	5838 mm	19' 2" ft
1007 mm	3' 4" ft	Lunghezza • Length • Longueur • Länge	1007 mm	3' 4" ft
2500 mm	8' 2" ft	Larghezza • Width • Largeur • Breite	2500 mm	8' 2" ft
2230 mm	7' 4" ft	Altezza • Height • Hauteur • Höhe	2230 mm	7' 4" ft
3080 Kg	6790 lbs	Peso (senza olio e montaggio) • Weight (without oil and fitting) Poids (sans huile et montage) • Gewicht (ohne öl und ohne)	3390 Kg	7480 lbs
55 l/min	14,5 us gal/min	Portata pompa (***) • Pump delivery (***) • Capacité de la pompe (***) • Pumpenheistung (***)	55 l/min	14,5 us gal/min
300 bar	4270 psi	Pressione • Pressure • Pression • Druck	300 bar	4270 psi
155 l	41 us gal	Capacità serbatoio olio • Oil tank capacity • Capacité de reservoir d'huile • Öl tank inhalt	155 l	41 us gal



## 27500 E8 A.S.C. plus



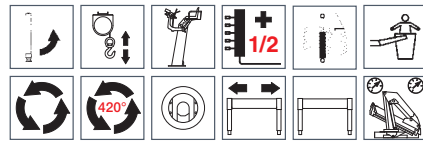
## 27500 E4F62 A.S.C. plus



### STANDARD



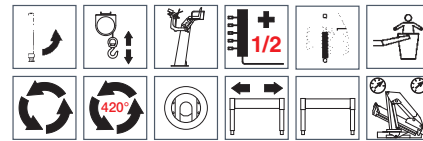
### OPTIONAL



### STANDARD



### OPTIONAL

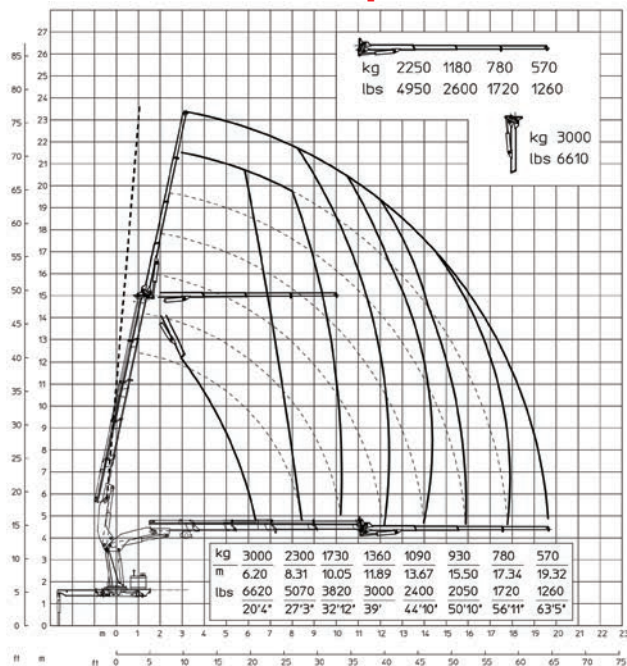


E8	E8		E4F62	E4F62
28000 da N*m	202560 Lb*ft	Momento statico massimo al perno torretta • Max. static moment at the turret pin Moment statique max. a l'axe de la tourelle • Max. statisches ubmoment am kranseulenbolzen	28000 da N*m	202560 Lb*ft
20.0 m	65' 7" ft	Sbraccio idraulico • Hydraulic boom length Longueur du bras hydraulique • Hydraulic reichweite	17.44 m	57' 3" ft
2800 da N*m	20260 Lb*ft	Coppia di rotazione • Slew torque • Moment de rotation • Drehmoment	2800 da N*m	20260 Lb*ft
sec. 40 - 360°	sec. 40 - 360°	Tempo di rotazione • Slewing speed • Temp de rotation • Schwenkgeschwindigkeit	sec. 40 - 360°	sec. 40 - 360°
1750+1750 mm	5' 9" + 5' 9" ft	Uscita stabilizzatori (*) • Outriggers extensions (*) Sortie des bequilles (*) • Breite der abstützung (*)	1750+1750 mm	5' 9" + 5' 9" ft
5838 mm	19' 2" ft	Larghezza stabilizzatori (**) • Outriggers width (**) Largeur des bequilles (**) • Breite der abstützung (**)	5838 mm	19' 2" ft
1007 mm	3' 4" ft	Lunghezza • Length • Longueur • Länge	1007 mm	3' 4" ft
2500 mm	8' 2" ft	Larghezza • Width • Largeur • Breite	2500 mm	8' 2" ft
2230 mm	7' 4" ft	Altezza • Height • Hauteur • Höhe	2230 mm	7' 4" ft
3610 Kg	7960 lbs	Peso (senza olio e montaggio) • Weight (without oil and fitting) Poids (sans huile et montage) • Gewicht (ohne öl und ohne)	3730 Kg	8225 lbs
55 l/min	14,5 us gal/min	Portata pompa (***) • Pump delivery (***) • Capacité de la pompe (***) • Pumpenheistung (***)	55 l/min	14,5 us gal/min
300 bar	4270 psi	Pressione • Pressure • Pression • Druck	300 bar	4270 psi
155 l	41 us gal	Capacità serbatoio olio • Oil tank capacity • Capacité de reservoir d'huile • Öl tank inhalt	155 l	41 us gal

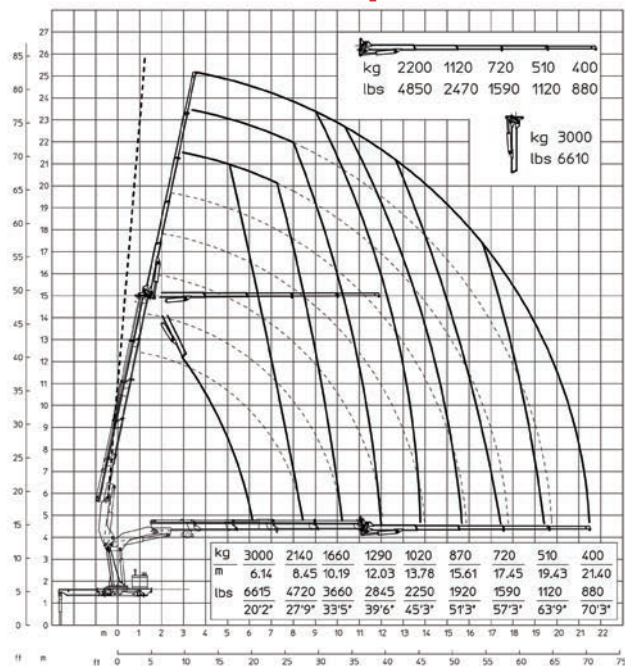


# 27500 E A.S.C. plus

## 27500 E4F63 A.S.C. plus



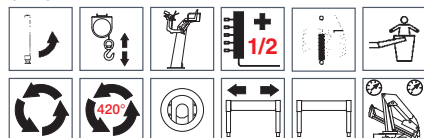
## 27500 E4F64 A.S.C. plus



### STANDARD



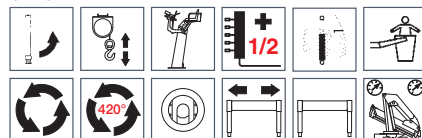
### OPTIONAL



### STANDARD



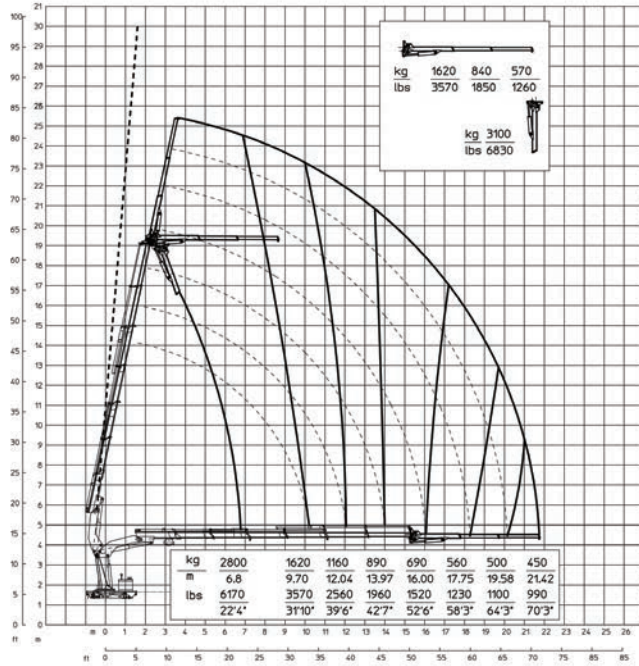
### OPTIONAL



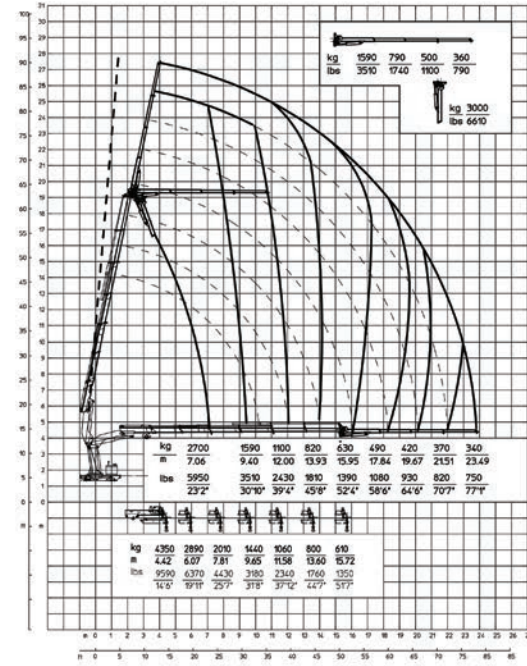
E4F63	E4F63		E4F64	E4F64
28000 da N*m	202560 Lb*ft	Momento statico massimo al perno torretta • Max. static moment at the turret pin Moment statique max. a l'axe de la tourelle • Max. statisches ubmoment am kranseulenbolzen	28000 da N*m	202560 Lb*ft
19.32 m	63' 5" ft	Sbraccio idraulico • Hydraulic boom length Longueur du bras hydraulique • Hydraulic reichweite	21.40 m	70' 3" ft
2800 da N*m	20260 Lb*ft	Coppia di rotazione • Slew torque • Moment de rotation • Drehmoment	2800 da N*m	20260 Lb*ft
sec. 40 - 360°	sec. 40 - 360°	Tempo di rotazione • Slewing speed • Temp de rotation • Schwenkgeschwindigkeit	sec. 40 - 360°	sec. 40 - 360°
1750+1750 mm	5' 9" + 5' 9" ft	Uscita stabilizzatori (*) • Outriggers extensions (*) Sortie des bequilles (*) • Breite der abstützung (*)	1750+1750 mm	5' 9" + 5' 9" ft
5838 mm	19' 2" ft	Larghezza stabilizzatori (**) • Outriggers width (**) Largeur des bequilles (**) • Breite der abstützung (**)	5838 mm	19' 2" ft
1007 mm	3' 4" ft	Lunghezza • Length • Longueur • Länge	1007 mm	3' 4" ft
2500 mm	8' 2" ft	Larghezza • Width • Largeur • Breite	2500 mm	8' 2" ft
2230 mm	7' 4" ft	Altezza • Height • Hauteur • Höhe	2230 mm	7' 4" ft
3790 Kg	8360 lbs	Peso (senza olio e montaggio) • Weight (without oil and fitting) Poids (sans huile et montage) • Gewicht (ohne öl und ohne)	3850 Kg	8490 lbs
55 l/min	14,5 us gal/min	Portata pompa (***) • Pump delivery (***) • Capacité de la pompe (***) • Pumpenheistung (***)	55 l/min	14,5 us gal/min
300 bar	4270 psi	Pressione • Pressure • Pression • Druck	300 bar	4270 psi
155 l	41 us gal	Capacità serbatoio olio • Oil tank capacity • Capacité de reservoir d'huile • Öl tank inhalt	155 l	41 us gal



## 27500 E6F62 A.S.C. plus



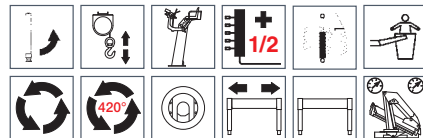
## 27500 E6F63 A.S.C. plus



### STANDARD



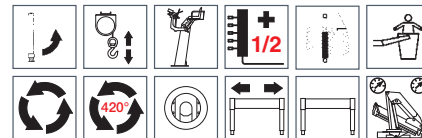
### OPTIONAL



### STANDARD



### OPTIONAL

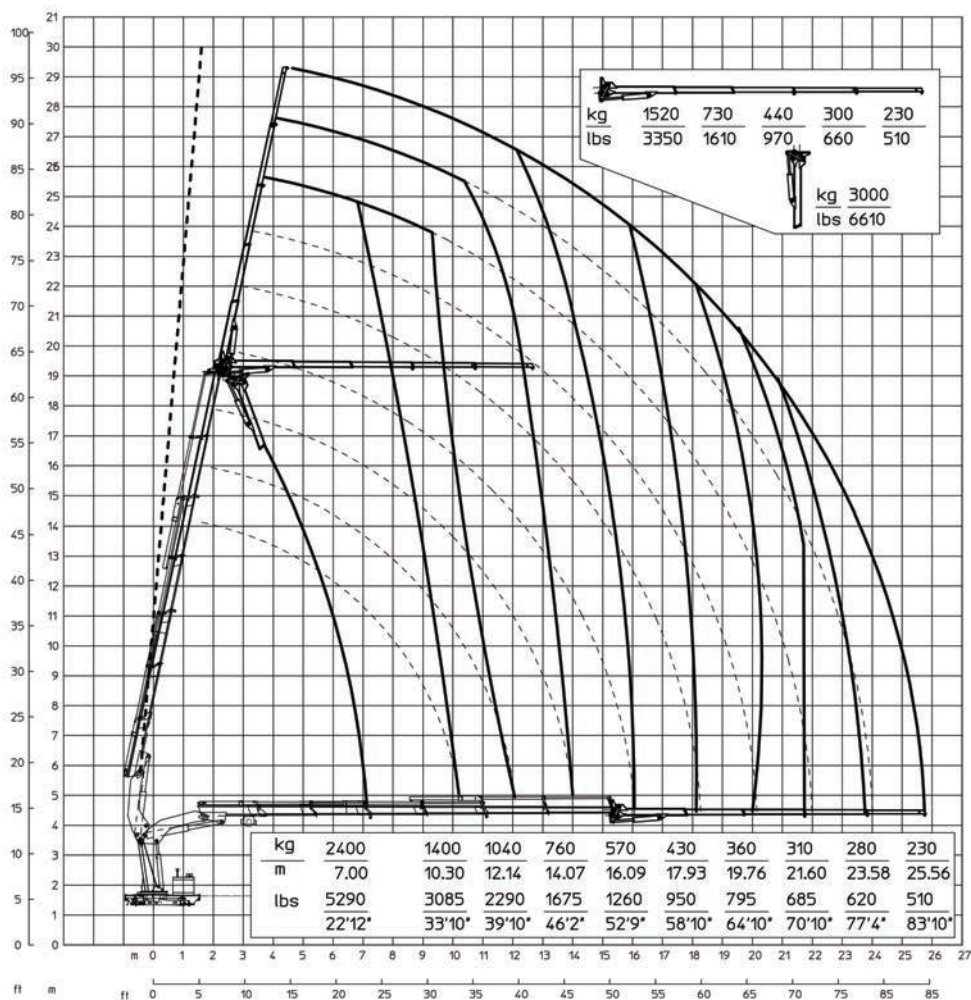


E6F62	E6F62		E6F63	E6F63
28200 da N*m	207992 Lb*ft	Momento statico massimo al perno torretta • Max. static moment at the turret pin Moment statique max. a l'axe de la tourelle • Max. statisches ubmoment am kranseulenbolzen	28200 da N*m	207992 Lb*ft
21.42 m	70' 3" ft	Sbraccio idraulico • Hydraulic boom length Longueur du bras hydraulique • Hydraulic reichweite	23.49 m	77' 1" ft
2800 da N*m	20652 Lb*ft	Coppia di rotazione • Slew torque • Moment de rotation • Drehmoment	2800 da N*m	20652 Lb*ft
sec. 40 - 360°	sec. 40 - 360°	Tempo di rotazione • Slewing speed • Temp de rotation • Schwenkgeschwindigkeit	sec. 40 - 360°	sec. 40 - 360°
1750+1750 mm	5' 9" + 5' 9" ft	Uscita stabilizzatori (*) • Outriggers extensions (*) Sortie des bequilles (*) • Breite der abstützung (*)	1750+1750 mm	5' 9" + 5' 9" ft
5838 mm	19' 2" ft	Larghezza stabilizzatori (**) • Outriggers width (**) Largeur des bequilles (**) • Breite der abstützung (**)	5838 mm	19' 2" ft
1007 mm	3' 4" ft	Lunghezza • Length • Longueur • Länge	1007 mm	3' 4" ft
2500 mm	8' 2" ft	Larghezza • Width • Largeur • Breite	2500 mm	8' 2" ft
2230 mm	7' 4" ft	Altezza • Height • Hauteur • Höhe	2230 mm	7' 4" ft
4030 Kg	8890 lbs	Peso (senza olio e montaggio) • Weight (without oil and fitting) Poids (sans huile et montage) • Gewicht (ohne öl und ohne)	4090 Kg	9020 lbs
55 l/min	14,5 us gal/min	Portata pompa (***) • Pump delivery (***) • Capacité de la pompe (***) • Pumpenheistung (***)	55 l/min	14,5 us gal/min
300 bar	4270 psi	Pressione • Pressure • Pression • Druck	300 bar	4270 psi
155 l	41 us gal	Capacità serbatoio olio • Oil tank capacity • Capacité de reservoir d'huile • Öl tank inhalt	155 l	41 us gal

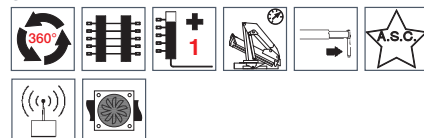


# 27500 E A.S.C. plus

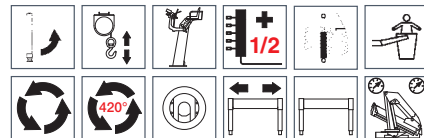
## 27500 E6F64 A.S.C. plus



### STANDARD

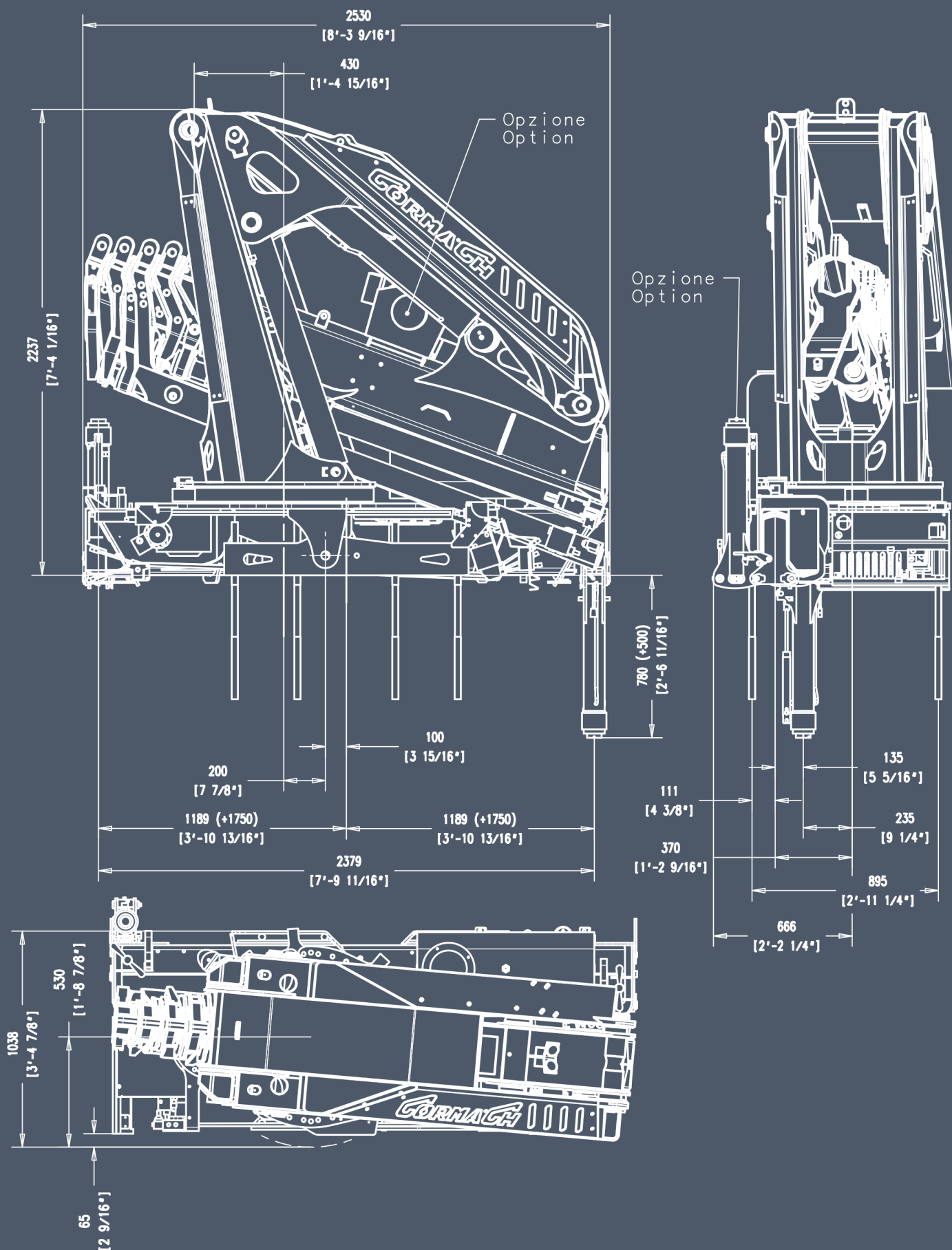


### OPTIONAL



E6F64	E6F64	
28200 da N*m	207992 Lb*ft	Momento statico massimo al perno torretta • Max. static moment at the turret pin Moment statique max. a l'axe de la tourelle • Max. statisches ubmoment am kranseulenbolzen
25.56 m	83' 10" ft	Sbraccio idraulico • Hydraulic boom length Longueur du bras hydraulique • Hydraulic reichweite
2800 da N*m	20652 Lb*ft	Coppia di rotazione • Slew torque • Moment de rotation • Drehmoment
sec. 40 - 360°	sec. 40 - 360°	Tempo di rotazione • Slewing speed • Temp de rotation • Schwenkgeschwindigkeit
1750+1750 mm	5' 9" + 5' 9" ft	Uscita stabilizzatori (*) • Outriggers extensions (*) Sortie des bequilles (*) • Breite der abstützung (*)
5838 mm	19' 2" ft	Larghezza stabilizzatori (**) • Outriggers width (**) Largeur des bequilles (**) • Breite der abstützung (**)
1007 mm	3' 4" ft	Lunghezza • Length • Longeur • Länge
2500 mm	8' 2" ft	Larghezza • Width • Largeur • Breite
2230 mm	7' 4" ft	Altezza • Heigth • Huteur • Höhe
4150 Kg	9150 lbs	Peso (senza olio e montaggio) • Weight (without oil and fitting) Poids (sans huile et montage) • Gewicht (ohne öl und ohne)
55 l/min	14,5 us gal/min	Portata pompa (***) • Pump delivery (***) • Capacité de la pompe (***) • Pumpenheistung (***)
300 bar	4270 psi	Pressione • Pressure • Pression • Druck
155 l	41 us gal	Capacità serbatoio olio • Oil tank capacity • Capacité de reservoir d'huile • Öl tank inhalt







# 27500 E A.S.C. plus



## STANDARD



Rotazione 360°  
Rotation 360°  
Rotation 360°  
Drehbereich 360°



Comandi bilaterali  
Dual Controls station  
Commandes a gauche et a droite  
Beidseitige bedienung



Comando supplementare non attivato (1)  
Additional free section not activated (1)  
Section du distributeur pas activé (1)  
Zusätzlicher steuerschieber (1)



Limitatore di momento  
Load limiting device  
Limiteur de charge  
Über lastabschal tungssystem



Stabilizzatori gru base estendibili idraulicamente  
Outriggers with hydraulic  
Stabilisateurs avec extension hydraulique  
Hydraulisch ausfahrbare stützen



Automatic Speed Control  
Automatic Speed Control  
Automatic Speed Control  
Automatic Speed Control



Radiocomando  
Radio remote control  
Radiocommandes  
Funkfernsteuerung



Scambiatore di calore  
Oil cooler  
Echangeur de chaleur  
Ölkühler

## OPTIONAL



Stabilizzatori gru base girevoli  
Tilt up outriggers  
Bequilles tournants  
Drehbare stützen



Verricello  
Winch  
Treuil  
Seilwinde



Posto di manovra in alto  
Top seat  
Siege en haut  
Hochsitz



Comando supplementare attivato (1/2)  
Additional function (1/2)  
Section du distributeur activée (1/2)  
Zusatzfunktion (1/2)



Trattamento marino della gru  
Marine treatment of the crane  
Traitement marine de la grue  
Marine behandlung des kranes



Cestello  
Basket  
Nacelle  
Personenkorb



Rotazione continua  
Continuos rotation  
Rotation continue  
Endlos schwenkwerk



Rotazione 400°  
Rotation 400°  
Rotation 400°  
Drehbereich 400°



Piastre di appoggio maggiorate  
Large ground plates  
Plaques stabilisateurs  
Bodenplatten



Traversa ausiliaria estendibile  
Additional outriggers with lateral extension  
Stabilisateur supplémentaires avec elargissement  
Ausfahrbare zusatz- stützen



Traversa ausiliaria fissa  
Additional outriggers beam without extension  
Stabilisateur supplémentaires sans elargissement  
Zusätzliche abstützbeine



Doppio limitatore di momento  
Double load limiting device  
Double limiteur de charge  
Doppel Überlastabschal tungssystem









# CORMAGH

Cormach s.r.l. - Via Madonnina, 27 - C.P. 199 - 25018 MONTICHIARI (BS) - ITALY  
 Tel. 0039.030.9656811 - Telefax 0039.030.9656846.7.8  
 E-mail: [info@cormach.com](mailto:info@cormach.com) - [www.cormach.com](http://www.cormach.com)

A fronte di una continua ricerca tecnologica i dati possono cambiare senza preavviso. Contattare il nostro Ufficio Commerciale per ulteriori informazioni.  
 Because of continuous technology research data can change without notice. Please, contact our Commercial Dept. for further information.  
 A cause de une continue recherche technologique les données peuvent changer sans préavis. Contacter notre Bureau Commercial pour des autres informations.  
 Irrtum und technische Änderung vorbehalten masse und gewichte unverbindlich. Unser Vertrieb erteilt Ihnen gerne weitere Auskünfte. Bitte rufen Sie uns an.  
 Debido a los continuos avances tecnológicos los datos pueden variar sin notificación previa. Para más información rogamos contacten nuestro Departamento Comercial.