

CORMACH

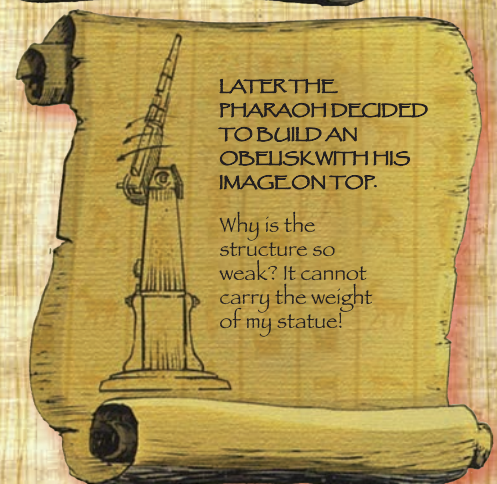
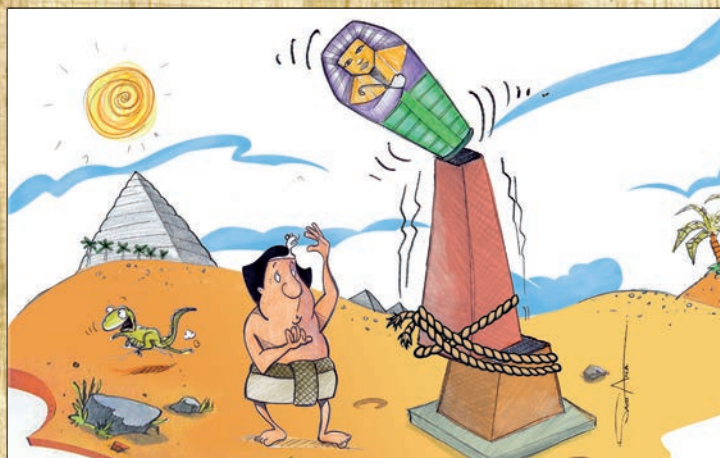
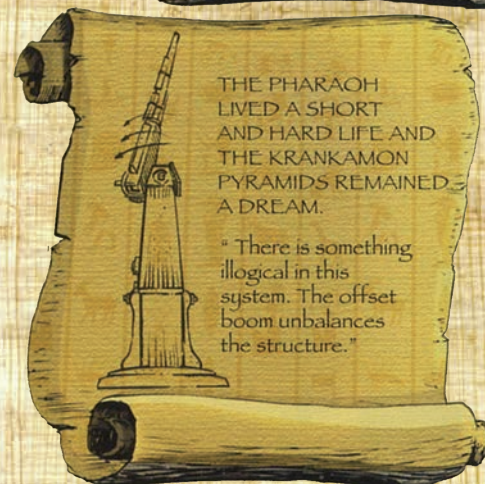
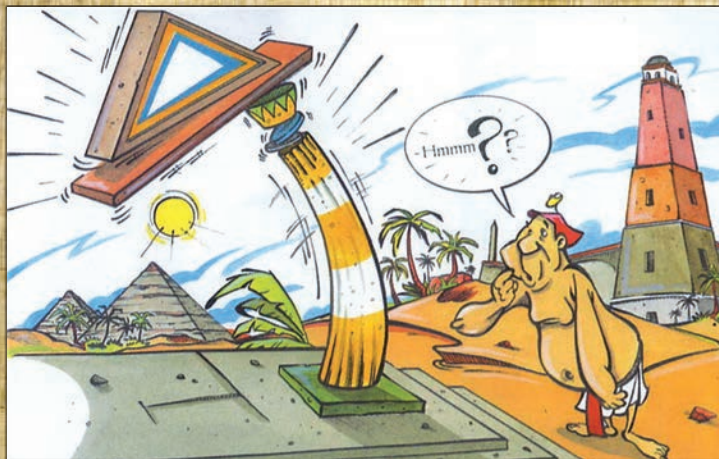
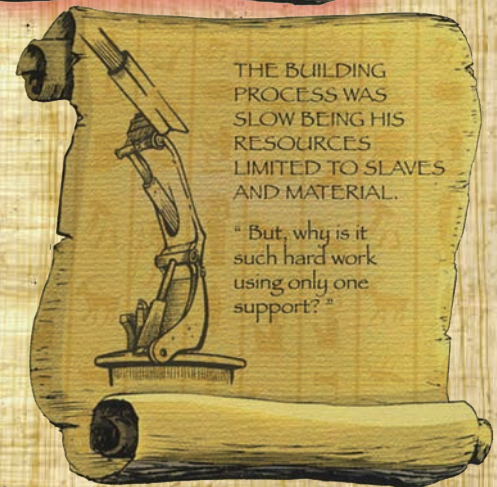
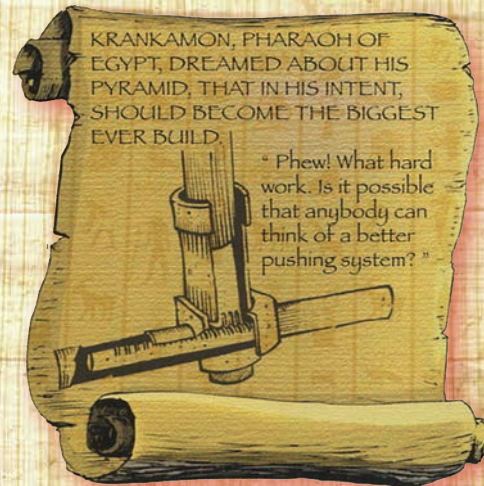


95000 E HP

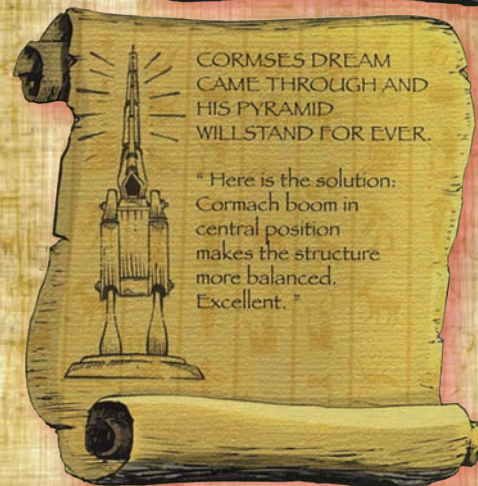
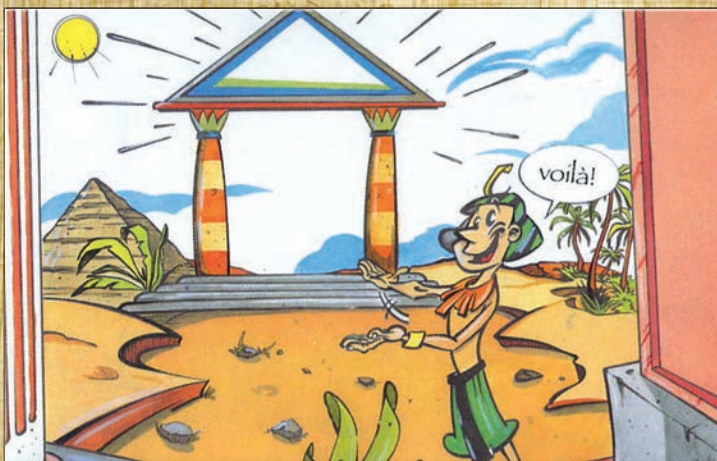
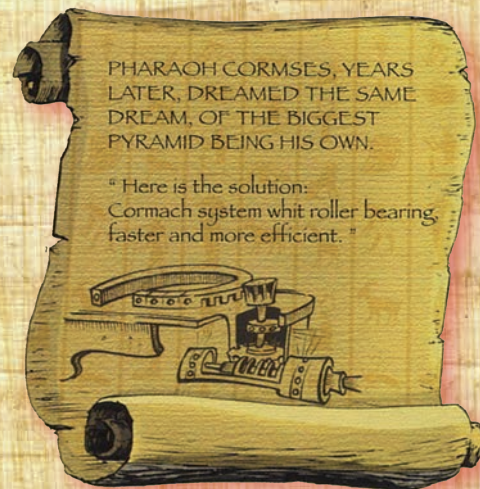


www.cormach.com

... ABOUT ANCIENT



EGYPT MANUSCRIPTS

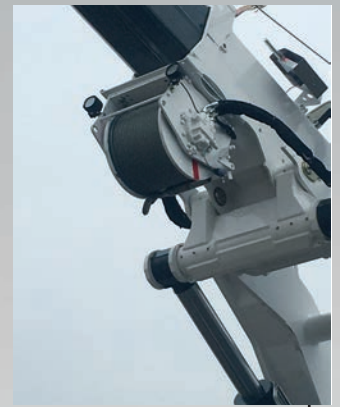




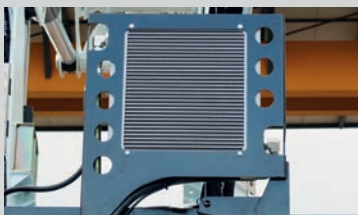
Radiocomando.
Radio remote control.
Radiocommande.
Funkfernsteuerung.



Sistema ritenzione cilindri gru chiusa.
Cylinders locking system when crane is folded.
Système de retenue vérin à grue fermé.
Halteung System mit zusammengelegten Kran.



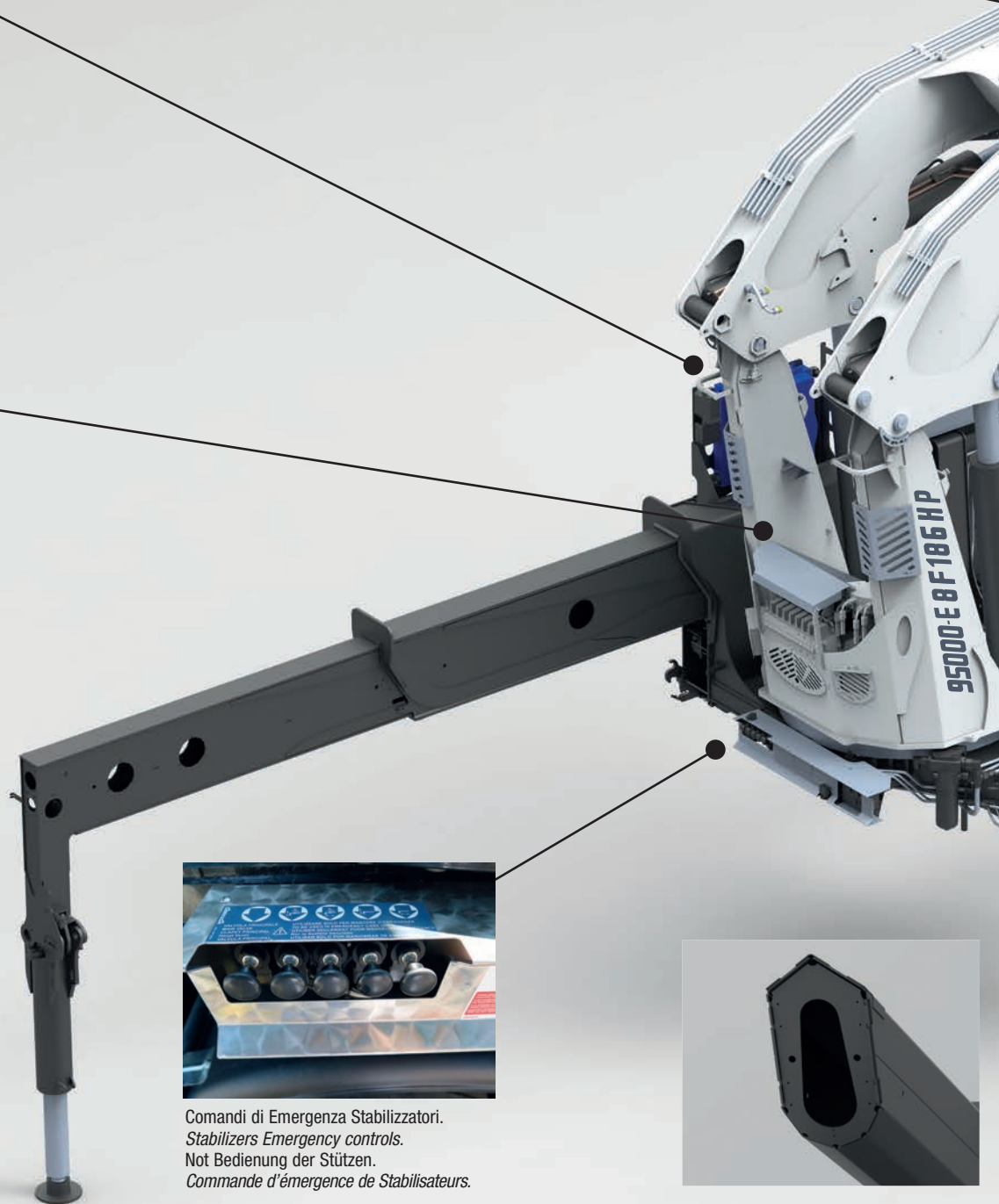
Verricello tiro diretto 2500 daN (OPZIONE).
2500 daN Winch on first line (OPTIONAL).
Treuil de tir direct 2500 daN (OPTION).
2500 daN Winde am ersten Seil (Auf Frage).



Scambiatore di calore.
Heat exchanger.
Echangeur de chaleur.
Ölkühler.

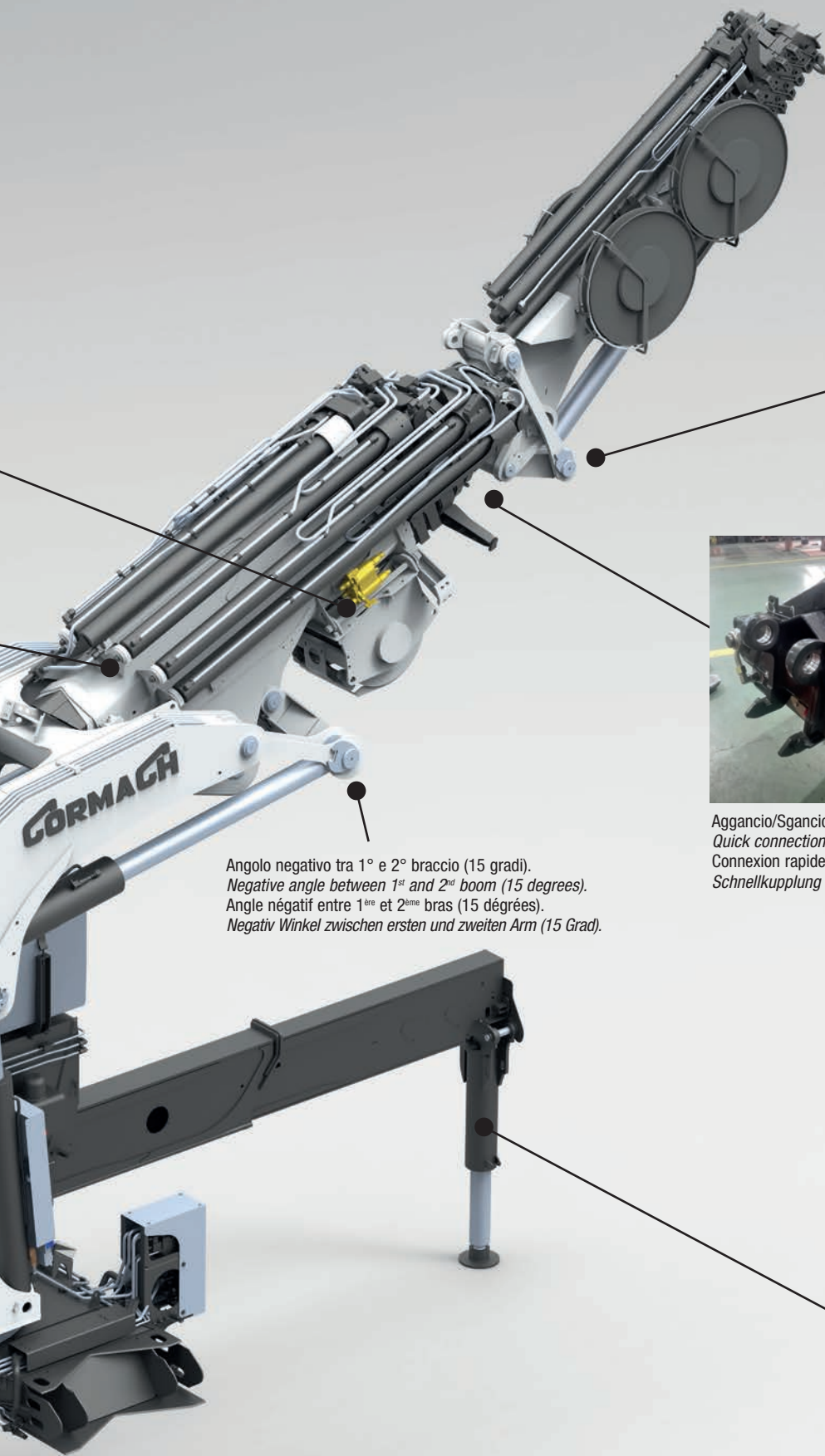


Distributore proporzionale DANFOSS.
DANFOSS proportional control bank.
Distributeur proportionnelle DANFOSS.
DANFOSS proportionnelle Steuerventil

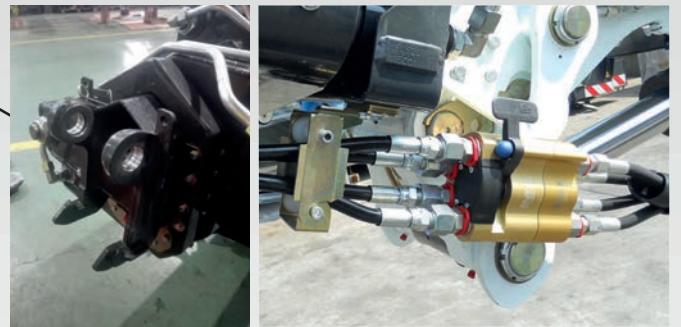


Comandi di Emergenza Stabilizzatori.
Stabilizers Emergency controls.
Not Bedienung der Stützen.
Commande d'urgence de Stabilisateurs.





Angolo negativo tra prolunghe e JIB (10 gradi).
Negative angle between extensions and JIB (10 degrees).
 Angle négatif entre extensions et JIB (10 degrés).
 Negativ Winkel zwischen Ausleger und jib (10 Grad).



Aggancio/Sgancio rapido JIB.
Quick connection and disconnection of the JIB.
 Connexion rapide de JIB.
 Schnellkupplung des JIB (für die Hydraulik: hydraulische Schnellkupplung).

Angolo negativo tra 1° e 2° braccio (15 gradi).
Negative angle between 1st and 2nd boom (15 degrees).
 Angle négatif entre 1^{ère} et 2^{ème} bras (15 degrés).
 Negativ Winkel zwischen ersten und zweiten Arm (15 Grad).



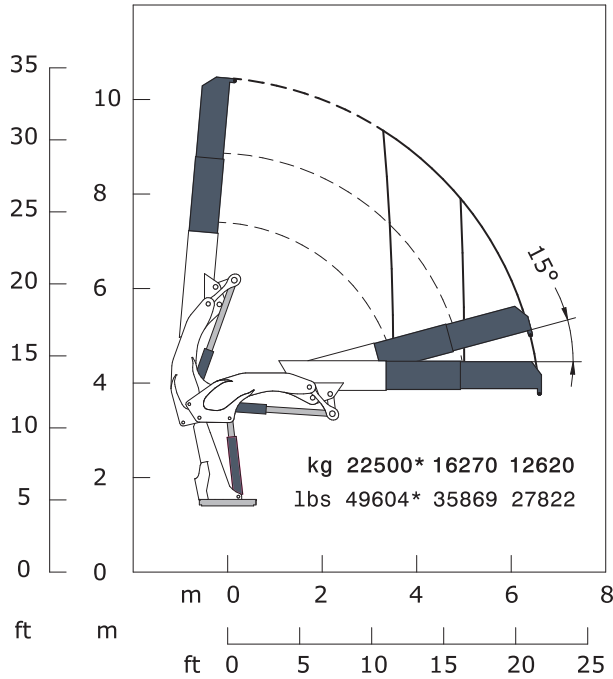
Cilindro stabilizzatore ribaltabile 180° (OPZIONE).
180 degrees tilting stabilising cylinder (OPTIONAL).
 Cylindre stabilisateur escamotable 180 degrés (OPTION).
 Stützzyylinder kann 180° umgekippt werden (auf Frage).

Sezione prolunghe di ultima generazione.
New generation extension profile.
 Nouveau profil des extension hydrauliques (octogonal).
 Verlaengerung-Schnitt neuer Generation

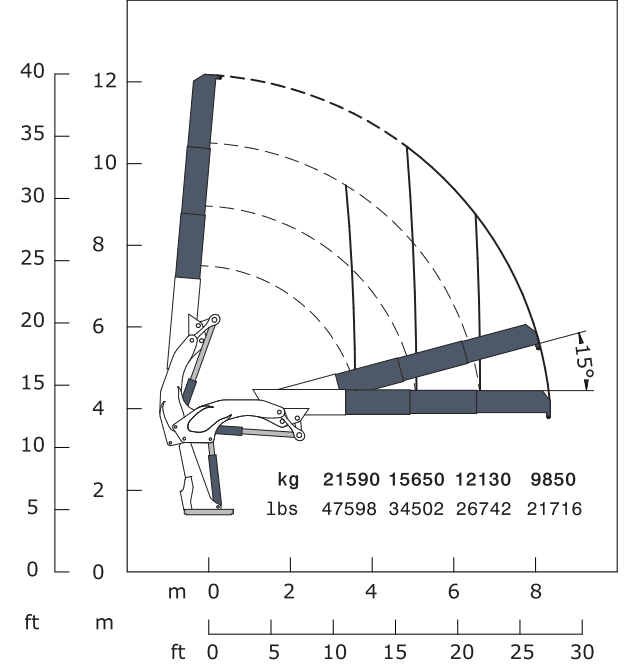




95000 E2

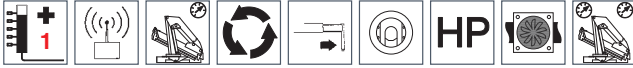


95000 E3



*Su gancio 30 Ton (opzione), *On 30 Ton hook (option), *Sur croquet 30 Ton (option), *Auf 30 Ton Haken (option).

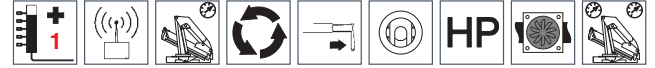
STANDARD



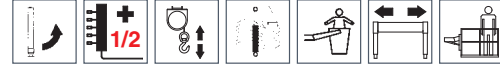
OPTIONAL



STANDARD



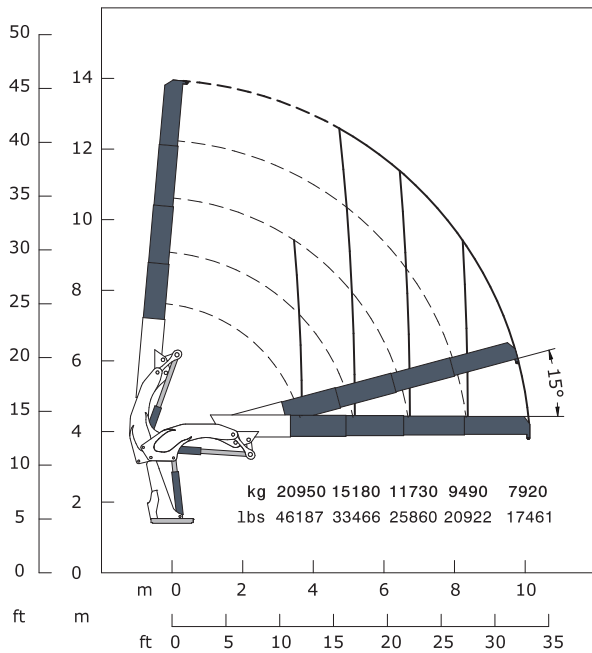
OPTIONAL



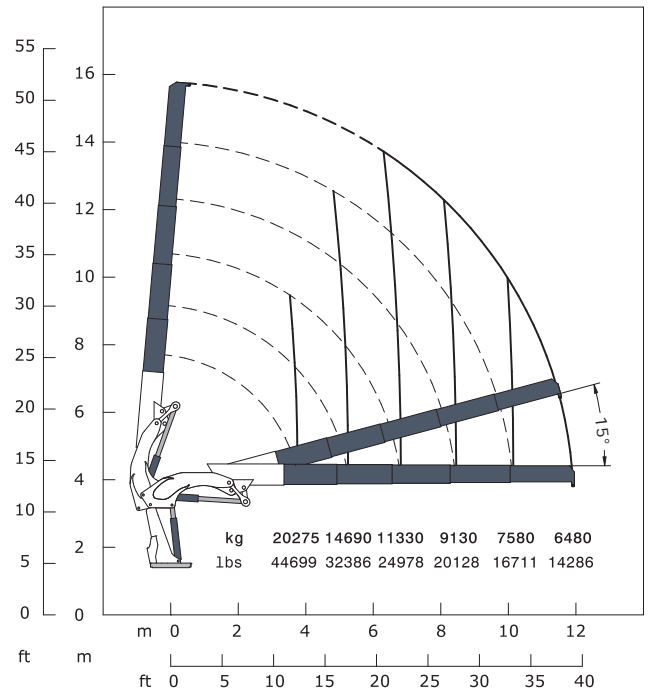
E2	E2		E3	E3
95000 da N*m	687267 Lb*ft	Momento statico massimo al perno torretta • Max. static moment at the turret pin Moment statique max. a l'axe de la tourelle • Max. statisches ubmoment am kransaulenbolzen	95000 da N*m	687267 Lb*ft
6.55 m	21' 6" ft	Sbraccio idraulico • Hydraulic boom length Longueur du bras hydraulique • Hydraulic reichweite	8.27 m	27' 1" ft
8400 da N*m	60769 Lb*ft	Coppia di rotazione • Slew torque • Moment de rotation • Drehmoment	8400 da N*m	60769 Lb*ft
sec. 90 - 360°	sec. 90 - 360°	Tempo di rotazione • Slewing speed • Temp de rotation • Schwenkgeschwindigkeit	sec. 90 - 360°	sec. 90 - 360°
3625+2875 mm	11'11" + 9'5" ft	Uscita stabilizzatori • Outriggers extensions Sortie des bequilles • Breite der abstützung	3625+2875 mm	11'11" + 9'5" ft
8850 mm	29' 0" ft	Larghezza stabilizzatori • Outriggers width Largeur des bequilles • Breite der abstützung	8850 mm	29' 0" ft
1842 mm	6' 1" ft	Lunghezza • Length • Longeur • Länge	1842 mm	6' 1" ft
2540 mm	8' 4" ft	Larghezza • Width • Largeur • Breite	2540 mm	8' 4" ft
2650 mm	8' 8" ft	Altezza • Height • Huteur • Höhe	2650 mm	8' 8" ft
7270 Kg	16028 lbs	Peso (senza olio e montaggio) • Weight (without oil and fitting) Poids (sans huile et montage) • Gewicht (ohne öl und ohne)	7590 Kg	16733 lbs
100 l/min	26 us gal/min	Portata pompa (*) • Pump delivery (*) • Capacité de la pompe (*) • Pumpenleistung (*)	100 l/min	26 us gal/min
330 bar	4692 psi	Pressione • Pressure • Pression • Druck	330 bar	4692 psi
260 l	69 us gal	Capacità serbatoio olio • Oil tank capacity • Capacité de reservoir d'huile • Öl tank inhalt	260 l	69 us gal

(*) Consigliata, (*) Recommended, (*) Reconnagé, (*) Empfohlen

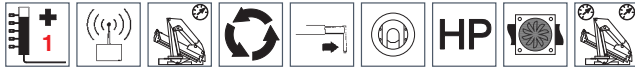
95000 E4



95000 E5



STANDARD



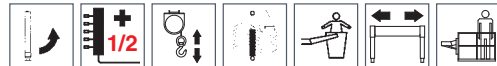
OPTIONAL



STANDARD



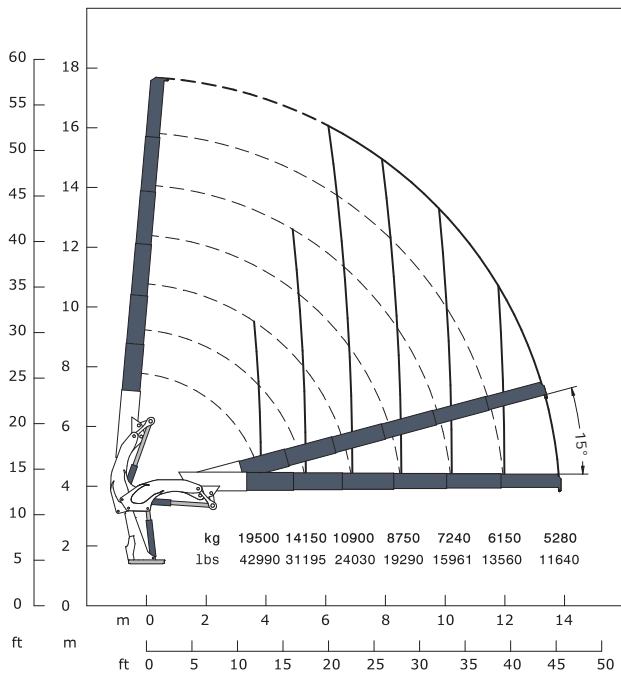
OPTIONAL



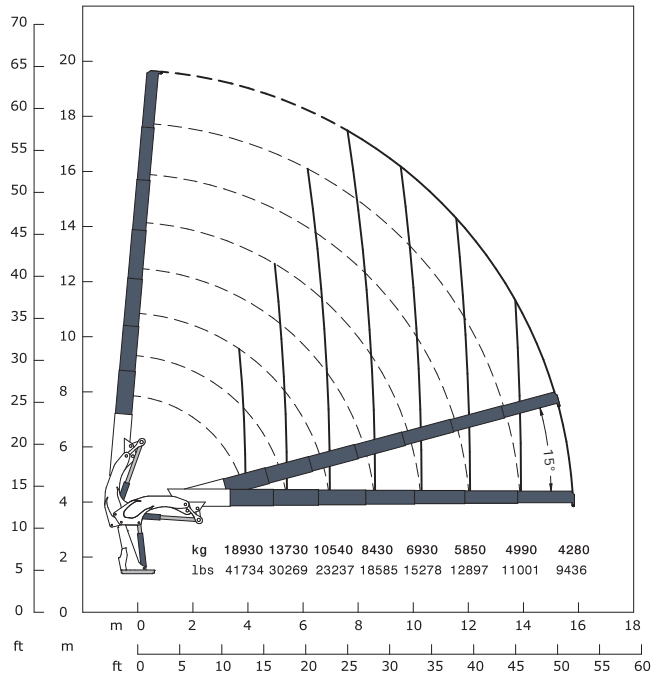
E4	E4		E5	E5
95000 da N*m	687267 Lb*ft	Momento statico massimo al perno torretta • Max. static moment at the turret pin Moment statique max. a l'axe de la tourelle • Max. statisches ubmoment am kransaulenbolzen	95000 da N*m	687267 Lb*ft
10.04 m	32' 11" ft	Sbraccio idraulico • Hydraulic boom length Longueur du bras hydraulique • Hydraulic reichweite	11.87 m	39' ft
8400 da N*m	60769 Lb*ft	Coppia di rotazione • Slew torque • Moment de rotation • Drehmoment	8400 da N*m	60769 Lb*ft
sec. 90 - 360°	sec. 90 - 360°	Tempo di rotazione • Slewing speed • Temp de rotation • Schwenkgeschwindigkeit	sec. 90 - 360°	sec. 90 - 360°
3625+2875 mm	11'11" + 9'5" ft	Uscita stabilizzatori • Outriggers extensions Sortie des bequilles • Breite der abstützung	3625+2875 mm	11'11" + 9'5" ft
8850 mm	29' 0" ft	Larghezza stabilizzatori • Outriggers width Largeur des bequilles • Breite der abstützung	8850 mm	29' 0" ft
1842 mm	6' 1" ft	Lunghezza • Length • Longeur • Länge	1842 mm	6' 1" ft
2540 mm	8' 4" ft	Larghezza • Width • Largeur • Breite	2540 mm	8' 4" ft
2650 mm	8' 8" ft	Altezza • Height • Hauteur • Höhe	2650 mm	8' 8" ft
7890 Kg	17395 lbs	Peso (senza olio e montaggio) • Weight (without oil and fitting) Poids (sans huile et montage) • Gewicht (ohne öl und ohne)	8190 Kg	18056 lbs
100 l/min	26 us gal/min	Portata pompa (*) • Pump delivery (*) • Capacité de la pompe (*) • Pumpenleistung (*)	100 l/min	26 us gal/min
330 bar	4692 psi	Pressione • Pressure • Pression • Druck	330 bar	4692 psi
260 l	69 us gal	Capacità serbatoio olio • Oil tank capacity • Capacité de reservoir d'huile • Öl tank inhalt	260 l	69 us gal

(*) Consigliata, (*) Recommended, (*) Reconnué, (*) Empfohlen

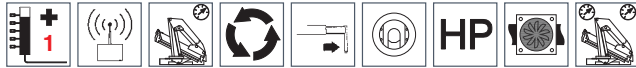
95000 E6



95000 E7



STANDARD



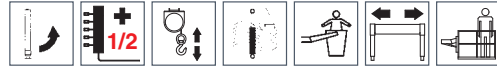
OPTIONAL



STANDARD



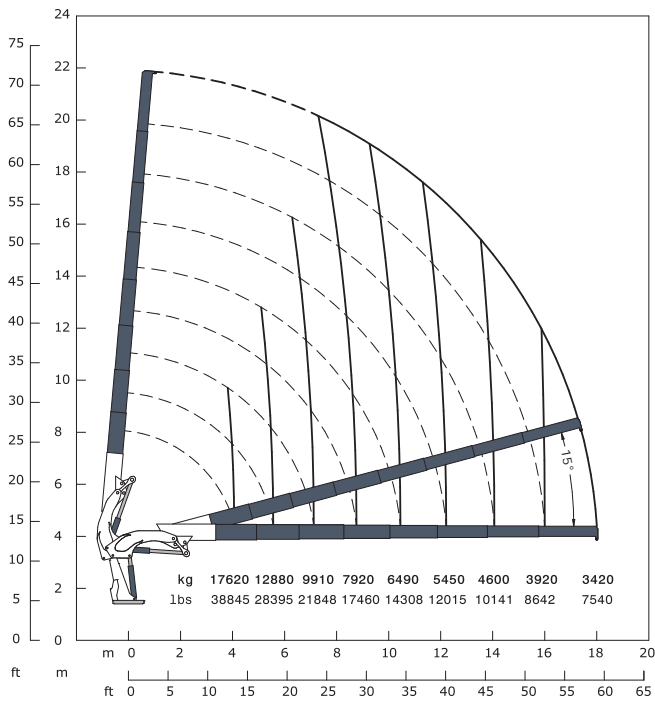
OPTIONAL



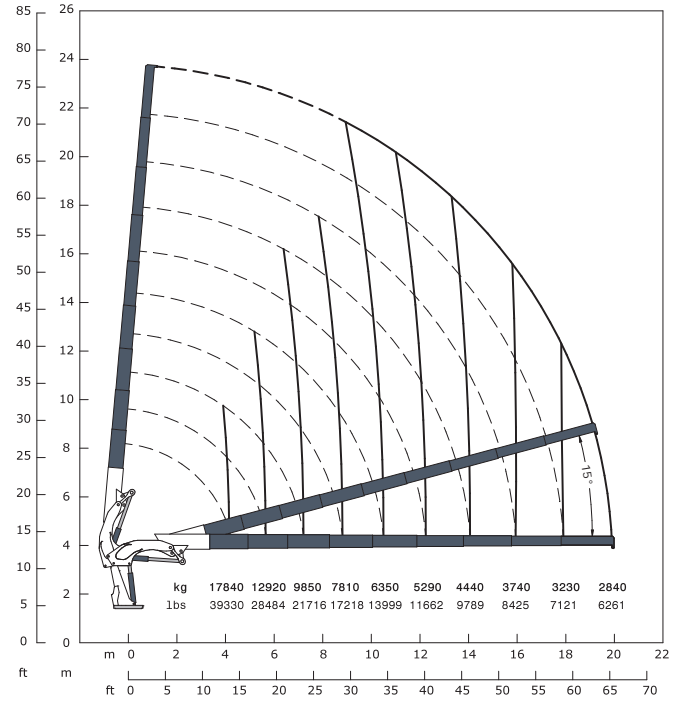
E6	E6		E7	E7
95000 da N*m	687267 Lb*ft	Momento statico massimo al perno torretta • Max. static moment at the turret pin Moment statique max. a l'axe de la tourelle • Max. statisches ubmoment am kransaulenbolzen	95000 da N*m	687267 Lb*ft
13.80 m	45' 3" ft	Sbraccio idraulico • Hydraulic boom length Longueur du bras hydraulique • Hydraulic reichweite	15.77 m	51' 9" ft
8400 da N*m	60769 Lb*ft	Coppia di rotazione • Slew torque • Moment de rotation • Drehmoment	8400 da N*m	60769 Lb*ft
sec. 90 - 360°	sec. 90 - 360°	Tempo di rotazione • Slewing speed • Temp de rotation • Schwenkgeschwindigkeit	sec. 90 - 360°	sec. 90 - 360°
3625+2875 mm	11'11" + 9'5" ft	Uscita stabilizzatori • Outriggers extensions Sortie des bequilles • Breite der abstützung	3625+2875 mm	11'11" + 9'5" ft
8850 mm	29' 0" ft	Larghezza stabilizzatori • Outriggers width Largeur des bequilles • Breite der abstützung	8850 mm	29' 0" ft
1842 mm	6' 1" ft	Lunghezza • Length • Longeur • Länge	1842 mm	6' 1" ft
2540 mm	8' 4" ft	Larghezza • Width • Largeur • Breite	2540 mm	8' 4" ft
2650 mm	8' 8" ft	Altezza • Height • Huteur • Höhe	2650 mm	8' 8" ft
8490 Kg	18717 lbs	Peso (senza olio e montaggio) • Weight (without oil and fitting) Poids (sans huile et montage) • Gewicht (ohne öl und ohne)	8770 Kg	19335 lbs
100 l/min	26 us gal/min	Portata pompa (*) • Pump delivery (*) • Capacité de la pompe (*) • Pumpenleistung (*)	100 l/min	26 us gal/min
330 bar	4692 psi	Pressione • Pressure • Pression • Druck	330 bar	4692 psi
260 l	69 us gal	Capacità serbatoio olio • Oil tank capacity • Capacité de reservoir d'huile • Öl tank inhalt	260 l	69 us gal

(*) Consigliata, (*) Recommended, (*) Reconnué, (*) Empfohlen

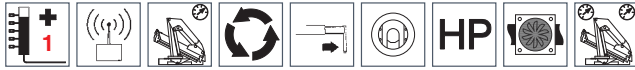
95000 E8



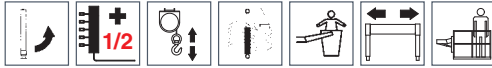
95000 E9



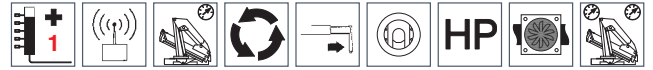
STANDARD



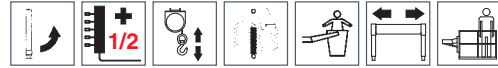
OPTIONAL



STANDARD



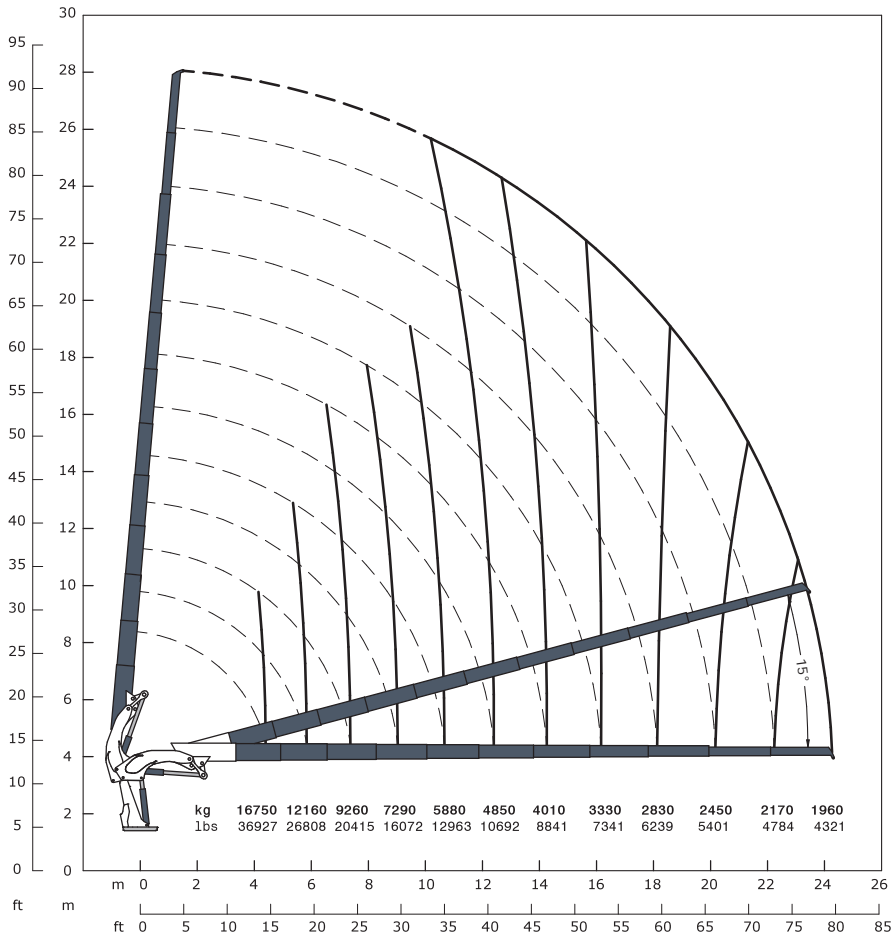
OPTIONAL



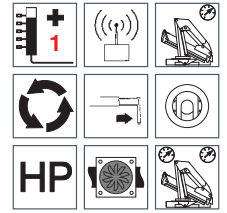
E8	E8		E9	E9
95000 da N*m	687267 Lb*ft	Momento statico massimo al perno torretta • Max. static moment at the turret pin Moment statique max. a l'axe de la tourelle • Max. statisches ubmoment am kransaulenbolzen	95000 da N*m	687267 Lb*ft
18.00 m	59' ft	Sbraccio idraulico • Hydraulic boom length Longueur du bras hydraulique • Hydraulic reichweite	19.94 m	65' 5" ft
8400 da N*m	60769 Lb*ft	Coppia di rotazione • Slew torque • Moment de rotation • Drehmoment	8400 da N*m	60769 Lb*ft
sec. 90 - 360°	sec. 90 - 360°	Tempo di rotazione • Slewing speed • Temp de rotation • Schwenkgeschwindigkeit	sec. 90 - 360°	sec. 90 - 360°
3625+2875 mm	11'11" + 9'5" ft	Uscita stabilizzatori • Outriggers extensions Sortie des bequilles • Breite der abstützung	3625+2875 mm	11'11" + 9'5" ft
8850 mm	29' 0" ft	Larghezza stabilizzatori • Outriggers width Largeur des bequilles • Breite der abstützung	8850 mm	29' 0" ft
1842 mm	6' 1" ft	Lunghezza • Length • Longeur • Länge	1842 mm	6' 1" ft
2540 mm	8' 4" ft	Larghezza • Width • Largeur • Breite	2540 mm	8' 4" ft
2650 mm	8' 8" ft	Altezza • Height • Hauteur • Höhe	2650 mm	8' 8" ft
9070 Kg	19996 lbs	Peso (senza olio e montaggio) • Weight (without oil and fitting) Poids (sans huile et montage) • Gewicht (ohne öl und ohne)	9300 Kg	20503 lbs
100 l/min	26 us gal/min	Portata pompa (*) • Pump delivery (*) • Capacité de la pompe (*) • Pumpenleistung (*)	100 l/min	26 us gal/min
330 bar	4692 psi	Pressione • Pressure • Pression • Druck	330 bar	4692 psi
260 l	69 us gal	Capacità serbatoio olio • Oil tank capacity • Capacité de reservoir d'huile • Öl tank inhalt	260 l	69 us gal

(*) Consigliata, (*) Recommended, (*) Reconnandé, (*) Empfohlen

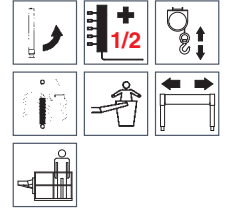
95000 E11



STANDARD

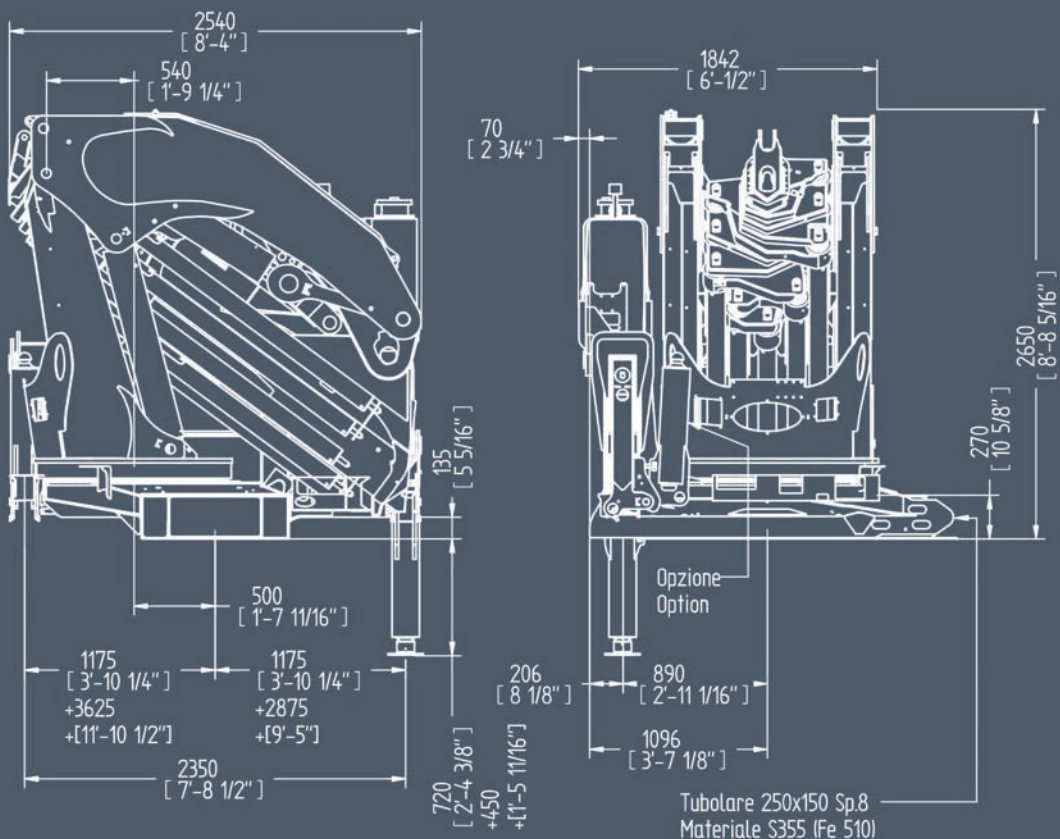


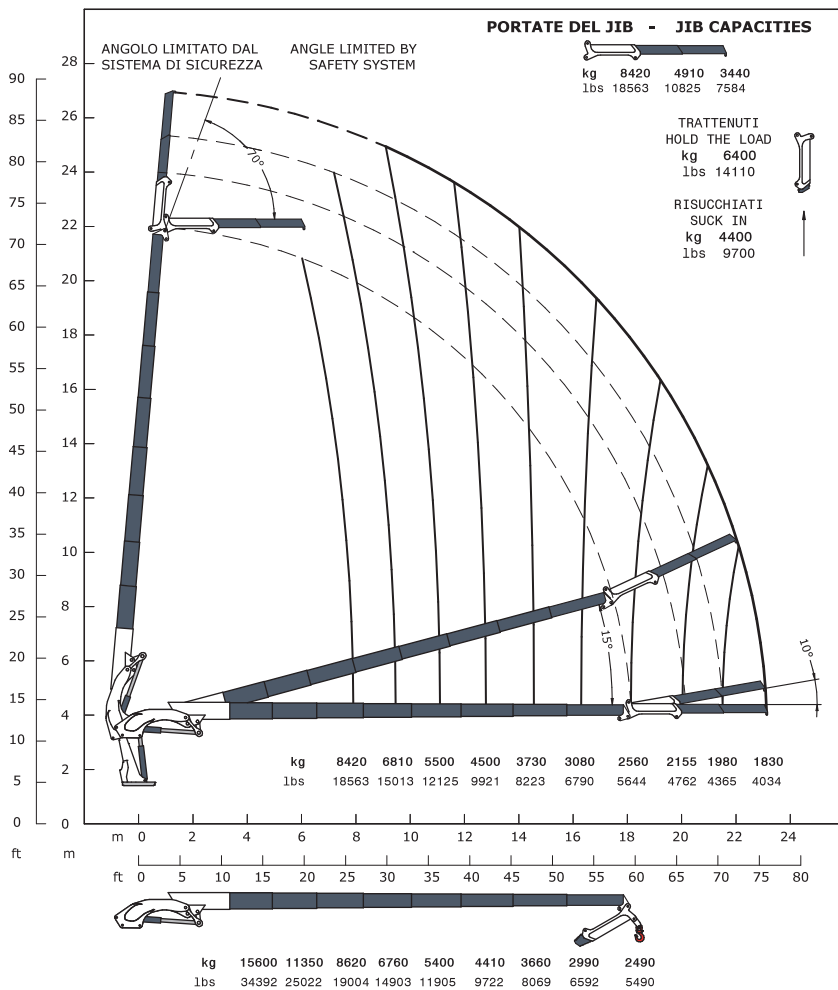
OPTIONAL



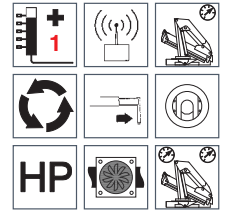
E11	E11	
95000 da N*m	687267 Lb*ft	Momento statico massimo al perno torretta • Max. static moment at the turret pin Moment statique max. a l'axe de la tourelle • Max. statisches ubmoment am kransaulenbolzen
24.30 m	79' 8" ft	Sbraccio idraulico • Hydraulic boom length Longueur du bras hydraulique • Hydraulic reichweite
8400 da N*m	60769 Lb*ft	Coppia di rotazione • Slew torque • Moment de rotation • Drehmoment
sec. 90 - 360°	sec. 90 - 360°	Tempo di rotazione • Slewing speed • Temp de rotation • Schwenkgeschwindigkeit
3625+2875 mm	11'11" + 9'5" ft	Uscita stabilizzatori • Outriggers extensions Sortie des bequilles • Breite der abstützung
8850 mm	29' 0" ft	Larghezza stabilizzatori • Outriggers width Largeur des bequilles • Breite der abstützung
1842 mm	6' 1" ft	Lunghezza • Length • Longueur • Länge
2540 mm	8' 4" ft	Larghezza • Width • Largeur • Breite
2650 mm	8' 8" ft	Altezza • Height • Hauteur • Höhe
9690 Kg	21363 lbs	Peso (senza olio e montaggio) • Weight (without oil and fitting) Poids (sans huile et montage) • Gewicht (ohne öl und ohne)
100 l/min	26 us gal/min	Portata pompa (*) • Pump delivery (*) • Capacité de la pompe (*) • Pumpenleistung (*)
330 bar	4692 psi	Pressione • Pressure • Pression • Druck
260 l	69 us gal	Capacità serbatoio olio • Oil tank capacity • Capacité de reservoir d'huile • Öl tank inhalt

(*) Consigliata, (*) Recommended, (*) Reconnmé, (*) Empfohlen

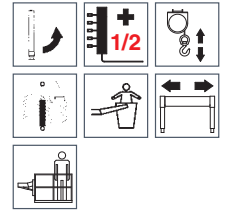




STANDARD



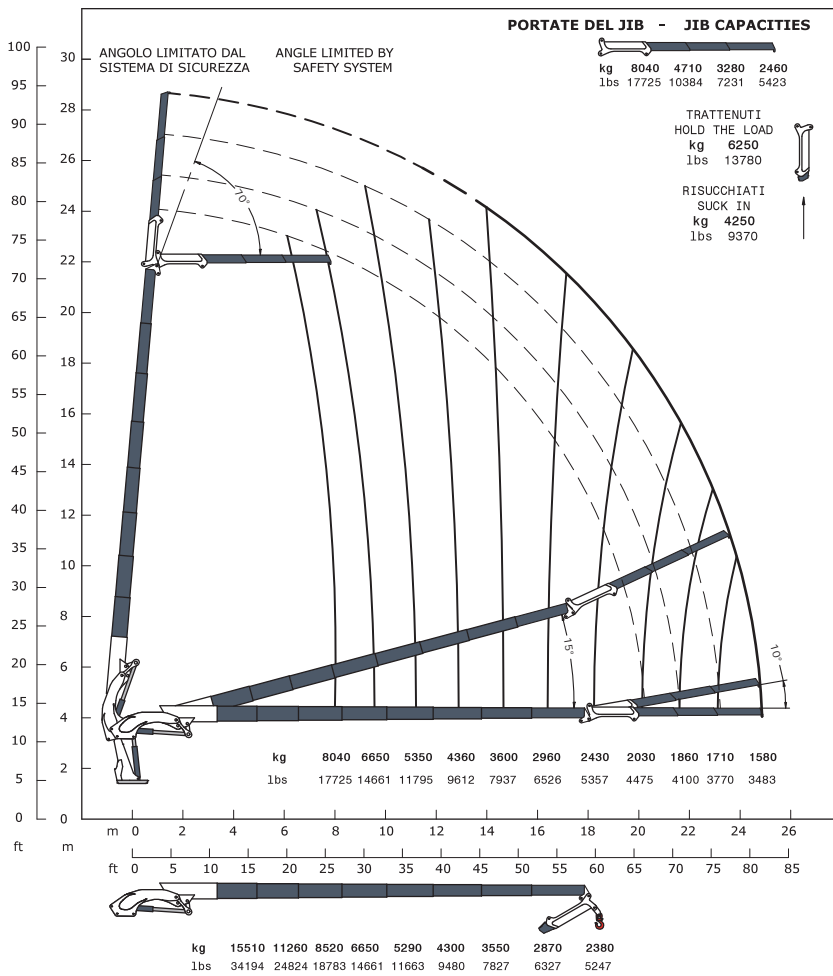
OPTIONAL



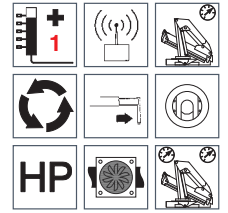
E8F182	E8F182	
95000 da N*m	687267 Lb*ft	Momento statico massimo al perno torretta • Max. static moment at the turret pin Moment statique max. a l'axe de la tourelle • Max. statisches ubmoment am kransaulenbolzen
23.11 m	75' 10" ft	Sbraccio idraulico • Hydraulic boom length Longueur du bras hydraulique • Hydraulic reichweite
8400 da N*m	60769 Lb*ft	Coppia di rotazione • Slew torque • Moment de rotation • Drehmoment
sec. 90 - 360°	sec. 90 - 360°	Tempo di rotazione • Slewing speed • Temp de rotation • Schwenkgeschwindigkeit
3625+2875 mm	11'11" + 9'5" ft	Uscita stabilizzatori • Outriggers extensions Sortie des bequilles • Breite der abstützung
8850 mm	29' 0" ft	Larghezza stabilizzatori • Outriggers width Largeur des bequilles • Breite der abstützung
1842 mm	6' 1" ft	Lunghezza • Length • Longueur • Länge
2550 mm	8' 4" ft	Larghezza • Width • Largeur • Breite
2950 mm	9' 8" ft	Altezza • Height • Hauteur • Höhe
10090 Kg	22245 lbs	Peso (senza olio e montaggio) • Weight (without oil and fitting) Poids (sans huile et montage) • Gewicht (ohne öl und ohne)
100 l/min	26 us gal/min	Portata pompa (*) • Pump delivery (*) • Capacité de la pompe (*) • Pumpenleistung (*)
330 bar	4692 psi	Pressione • Pressure • Pression • Druck
260 l	69 us gal	Capacità serbatoio olio • Oil tank capacity • Capacité de reservoir d'huile • Öl tank inhalt

(*) Consigliata, (*) Recommended, (*) Reconnandé, (*) Empfohlen

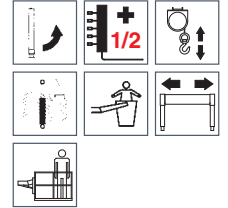
95000 E8F183



STANDARD



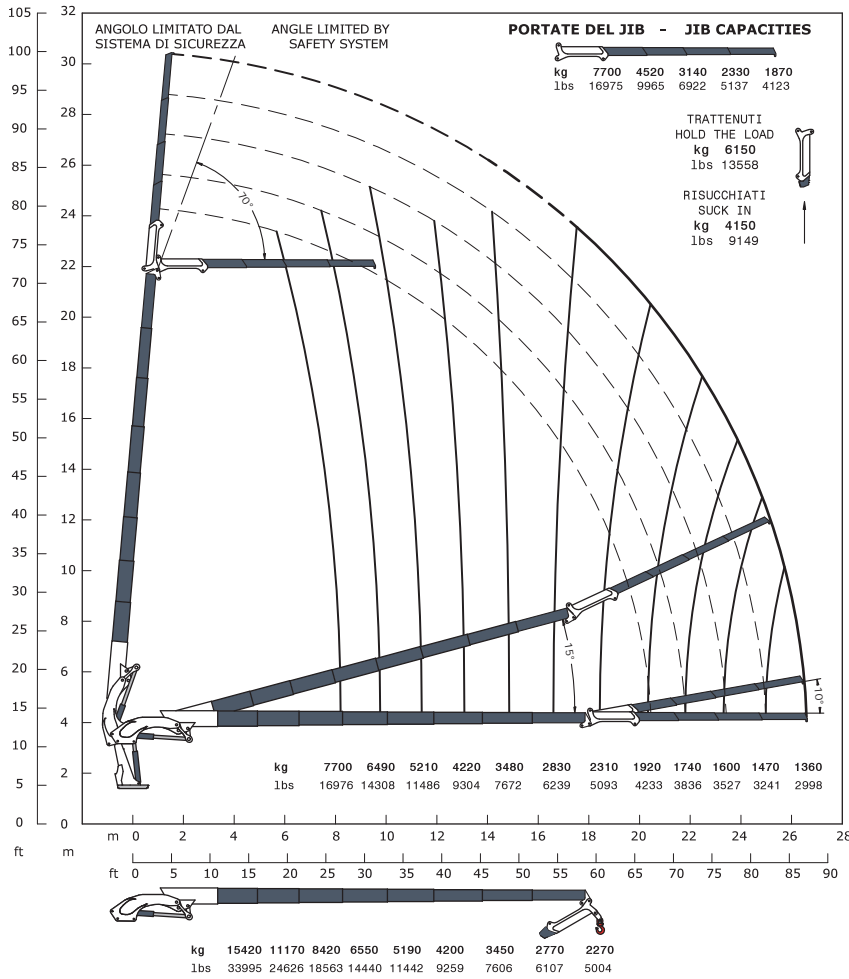
OPTIONAL



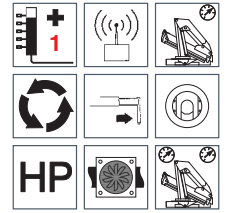
E8F183	E8F183	
95000 da N*m	687267 Lb*ft	Momento statico massimo al perno torretta • Max. static moment at the turret pin Moment statique max. a l'axe de la tourelle • Max. statisches ubmoment am kransaulenbolzen
24.84 m	81' 5" ft	Sbraccio idraulico • Hydraulic boom length Longueur du bras hydraulique • Hydraulic reichweite
8400 da N*m	60769 Lb*ft	Coppia di rotazione • Slew torque • Moment de rotation • Drehmoment
sec. 90 - 360°	sec. 90 - 360°	Tempo di rotazione • Slewing speed • Temp de rotation • Schwenkgeschwindigkeit
3625+2875 mm	11'11" + 9'5" ft	Uscita stabilizzatori • Outriggers extensions Sortie des bequilles • Breite der abstützung
8850 mm	29' 0" ft	Larghezza stabilizzatori • Outriggers width Largeur des bequilles • Breite der abstützung
1842 mm	6' 1" ft	Lunghezza • Length • Longeur • Länge
2550 mm	8' 4" ft	Larghezza • Width • Largeur • Breite
2950 mm	9' 8" ft	Altezza • Height • Hauteur • Höhe
10210 Kg	22509 lbs	Peso (senza olio e montaggio) • Weight (without oil and fitting) Poids (sans huile et montage) • Gewicht (ohne öl und ohne)
100 l/min	26 us gal/min	Portata pompa (*) • Pump delivery (*) • Capacité de la pompe (*) • Pumpenleistung (*)
330 bar	4692 psi	Pressione • Pressure • Pression • Druck
260 l	69 us gal	Capacità serbatoio olio • Oil tank capacity • Capacité de reservoir d'huile • Öl tank inhalt

(*) Consigliata, (*) Recommended, (*) Reconnmé, (*) Empfohlen

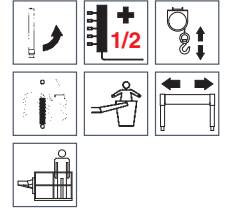
95000 E8F184



STANDARD



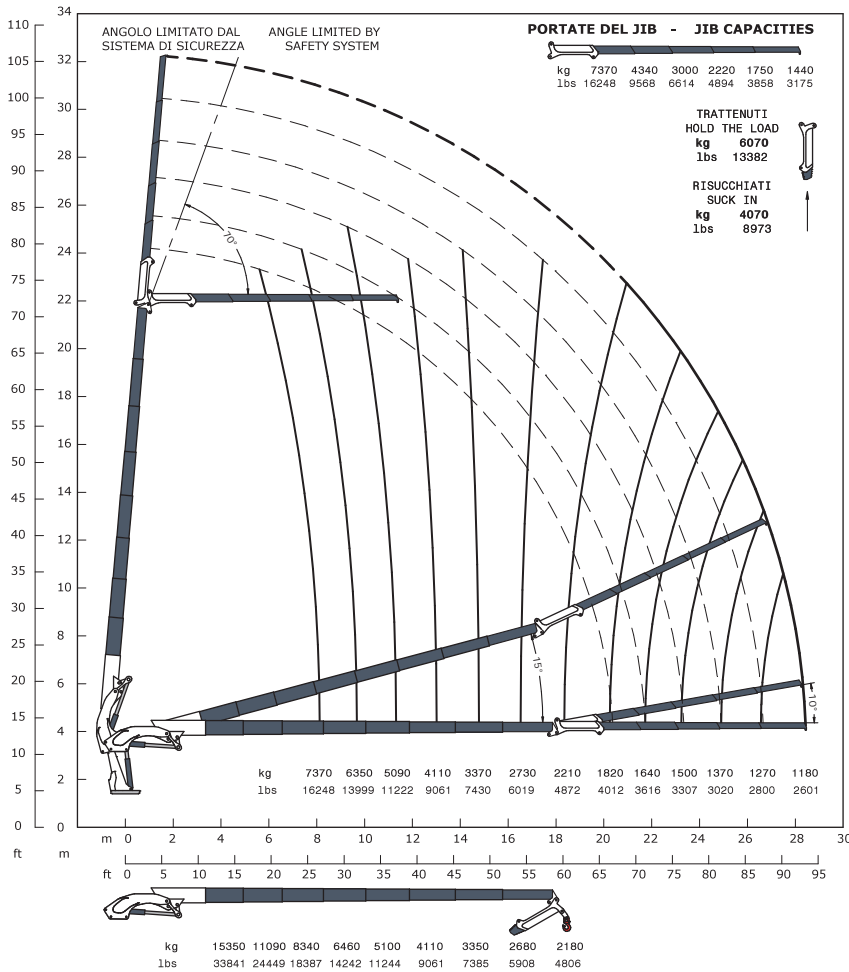
OPTIONAL



E8F184	E8F184	
95000 da N*m	687267 Lb*ft	Momento statico massimo al perno torretta • Max. static moment at the turret pin Moment statique max. a l'axe de la tourelle • Max. statisches ubmoment am kransaulenbolzen
26.57 m	87' 2" ft	Sbraccio idraulico • Hydraulic boom length Longueur du bras hydraulique • Hydraulic reichweite
8400 da N*m	60769 Lb*ft	Coppia di rotazione • Slew torque • Moment de rotation • Drehmoment
sec. 90 - 360°	sec. 90 - 360°	Tempo di rotazione • Slewing speed • Temp de rotation • Schwenkgeschwindigkeit
3625+2875 mm	11'11" + 9'5" ft	Uscita stabilizzatori • Outriggers extensions Sortie des bequilles • Breite der abstützung
8850 mm	29' 0" ft	Larghezza stabilizzatori • Outriggers width Largeur des bequilles • Breite der abstützung
1842 mm	6' 1" ft	Lunghezza • Length • Longueur • Länge
2550 mm	8' 4" ft	Larghezza • Width • Largeur • Breite
2950 mm	9' 8" ft	Altezza • Height • Hauteur • Höhe
10320 Kg	22752 lbs	Peso (senza olio e montaggio) • Weight (without oil and fitting) Poids (sans huile et montage) • Gewicht (ohne öl und ohne)
100 l/min	26 us gal/min	Portata pompa (*) • Pump delivery (*) • Capacité de la pompe (*) • Pumpenleistung (*)
330 bar	4692 psi	Pressione • Pressure • Pression • Druck
260 l	69 us gal	Capacità serbatoio olio • Oil tank capacity • Capacité de reservoir d'huile • Öl tank inhalt

(*) Consigliata, (*) Recommended, (*) Reconnué, (*) Empfohlen

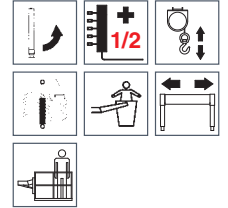
95000 E8F185



STANDARD



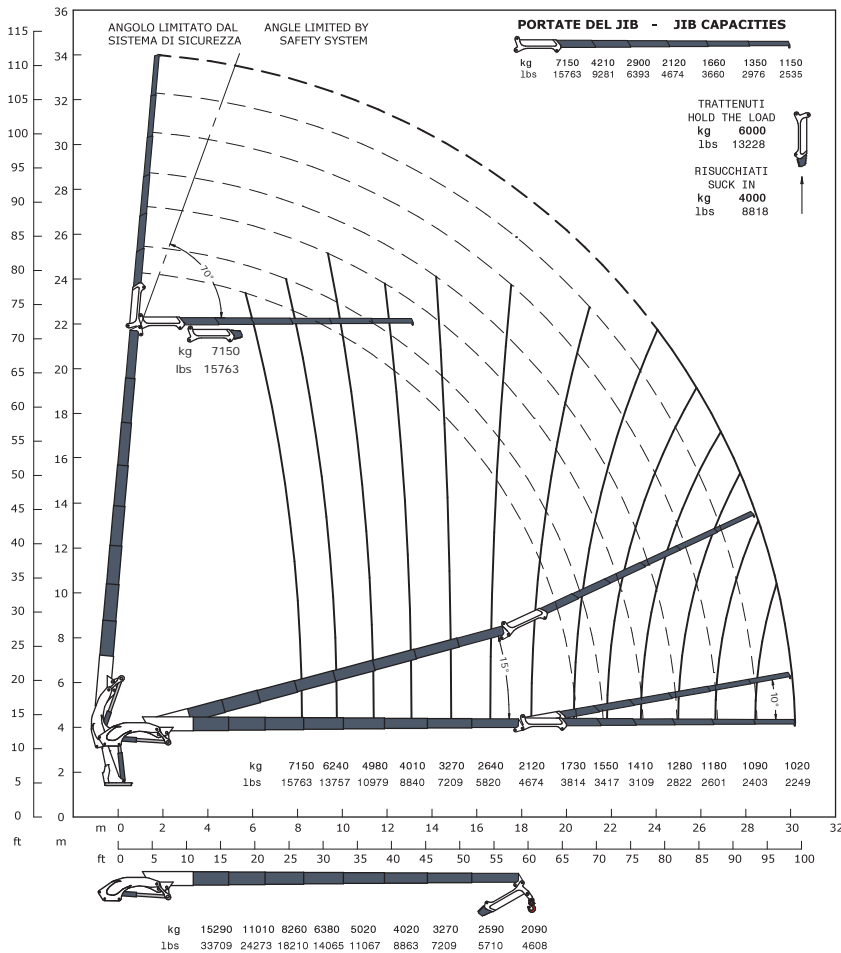
OPTIONAL



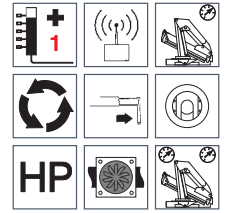
E8F185	E8F185	
95000 da N*m	687267 Lb*ft	Momento statico massimo al perno torretta • Max. static moment at the turret pin Moment statique max. a l'axe de la tourelle • Max. statisches ubmoment am kran Saulenbolzen
28.39 m	93' 1" ft	Sbraccio idraulico • Hydraulic boom length Longueur du bras hydraulique • Hydraulic reichweite
8400 da N*m	60769 Lb*ft	Coppia di rotazione • Slew torque • Moment de rotation • Drehmoment
sec. 90 - 360°	sec. 90 - 360°	Tempo di rotazione • Slewing speed • Temp de rotation • Schwenkgeschwindigkeit
3625+2875 mm	11'11" + 9'5" ft	Uscita stabilizzatori • Outriggers extensions Sortie des bequilles • Breite der abstützung
8850 mm	29' 0" ft	Larghezza stabilizzatori • Outriggers width Largeur des bequilles • Breite der abstützung
1842 mm	6' 1" ft	Lunghezza • Length • Longeur • Länge
2550 mm	8' 4" ft	Larghezza • Width • Largeur • Breite
2950 mm	9' 8" ft	Altezza • Height • Hauteur • Höhe
10420 Kg	22972 lbs	Peso (senza olio e montaggio) • Weight (without oil and fitting) Poids (sans huile et montage) • Gewicht (ohne öl und ohne)
100 l/min	26 us gal/min	Portata pompa (*) • Pump delivery (*) • Capacité de la pompe (*) • Pumpenleistung (*)
330 bar	4692 psi	Pressione • Pressure • Pression • Druck
260 l	69 us gal	Capacità serbatoio olio • Oil tank capacity • Capacité de reservoir d'huile • Öl tank inhalt

(*) Consigliata, (*) Recommended, (*) Reconnué, (*) Empfohlen

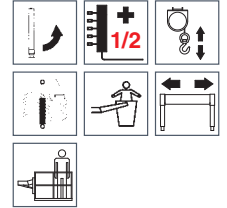
95000 E8F186



STANDARD

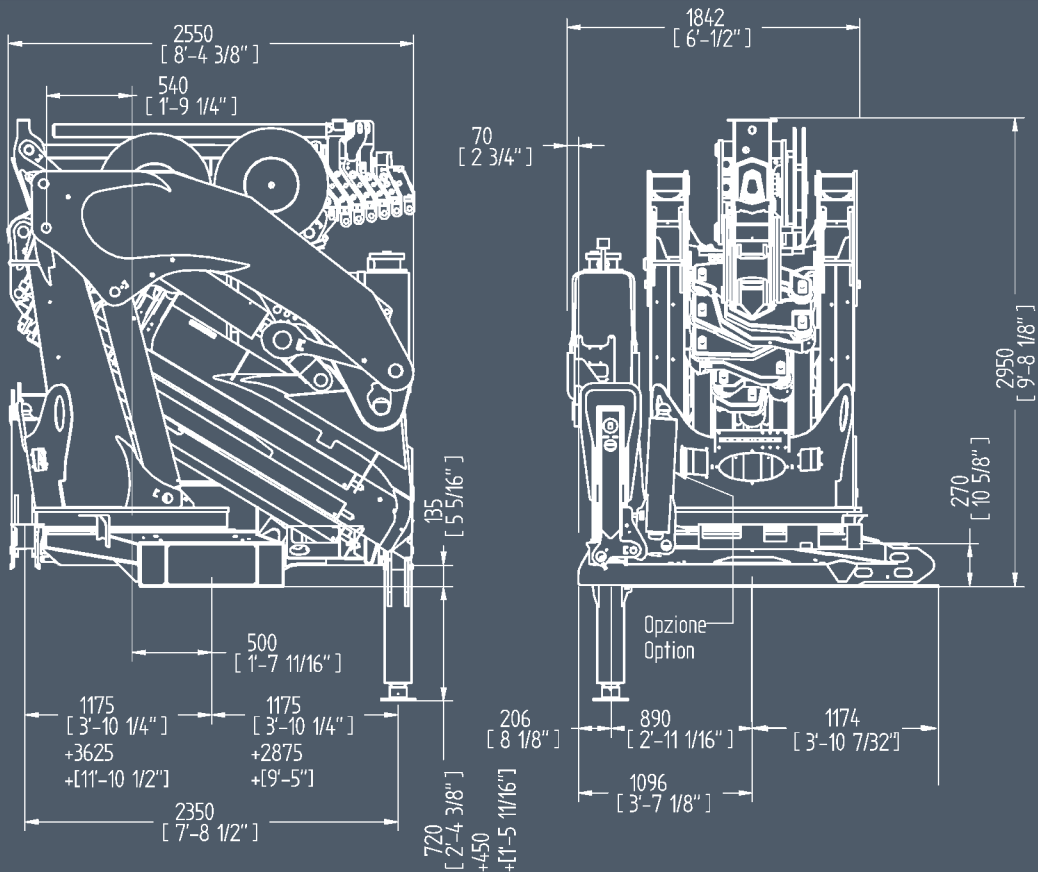


OPTIONAL



E8F186	E8F186	
95000 da N*m	687267 Lb*ft	Momento statico massimo al perno torretta • Max. static moment at the turret pin Moment statique max. a l'axe de la tourelle • Max. statisches ubmoment am kransaulenbolzen
30.18 m	99' ft	Sbraccio idraulico • Hydraulic boom length Longueur du bras hydraulique • Hydraulic reichweite
8400 da N*m	60769 Lb*ft	Coppia di rotazione • Slew torque • Moment de rotation • Drehmoment
sec. 90 - 360°	sec. 90 - 360°	Tempo di rotazione • Slewing speed • Temp de rotation • Schwenkgeschwindigkeit
3625+2875 mm	11'11" + 9'5" ft	Uscita stabilizzatori • Outriggers extensions Sortie des bequilles • Breite der abstützung
8850 mm	29' 0" ft	Larghezza stabilizzatori • Outriggers width Largeur des bequilles • Breite der abstützung
1842 mm	6' 1" ft	Lunghezza • Length • Longueur • Länge
2550 mm	8' 4" ft	Larghezza • Width • Largeur • Breite
2950 mm	9' 8" ft	Altezza • Height • Hauteur • Höhe
10510 Kg	23171 lbs	Peso (senza olio e montaggio) • Weight (without oil and fitting) Poids (sans huile et montage) • Gewicht (ohne öl und ohne)
100 l/min	26 us gal/min	Portata pompa (*) • Pump delivery (*) • Capacité de la pompe (*) • Pumpenleistung (*)
330 bar	4692 psi	Pressione • Pressure • Pression • Druck
260 l	69 us gal	Capacità serbatoio olio • Oil tank capacity • Capacité de reservoir d'huile • Öl tank inhalt

(*) Consigliata, (*) Recommended, (*) Reconnmé, (*) Empfohlen

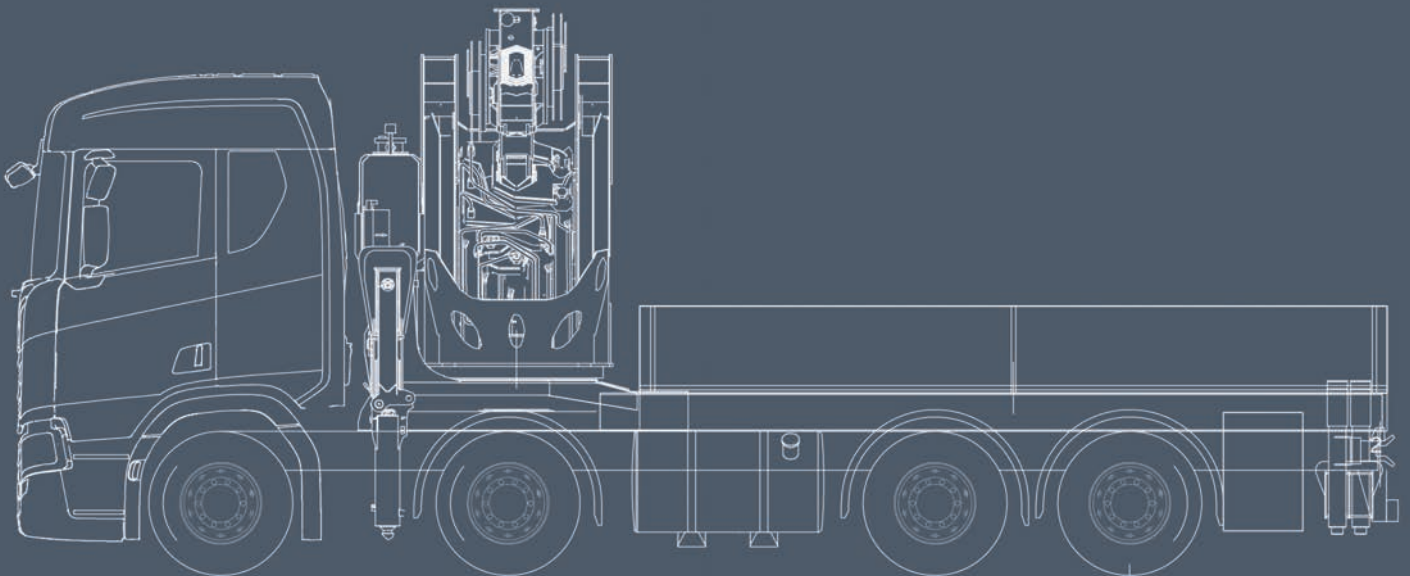






E2		E3		E4		E5		E6		E7		E8	
m/ft	kg/lbs	m/ft	kg/lbs	m/ft	kg/lbs	m/ft	kg/lbs	m/ft	kg/lbs	m/ft	kg/lbs	m/ft	kg/lbs
3.54	22500*	3.66	21590	3.74	20950	3.83	20275	3.95	17370	4.03	18930	4.31	17620
11'7"	49604*	12'0"	47598	12'3"	46187	12'7"	44699	13'0"	42990	12'11"	41734	14'3"	38845
5.00	16270	5.13	15650	5.21	15180	5.30	14690	5.42	14150	5.50	13730	5.77	12880
16'5"	35869	16'10"	34502	17'1"	33466	17'5"	32386	17'9"	31195	18'1"	30269	19'1"	28395
6.55	12620	6.67	12130	6.75	11730	6.84	11330	6.96	10900	7.04	10540	7.31	9910
21'6"	27822	21'10"	26742	22'1"	25860	22'5"	24978	22'10"	24030	23'1"	23237	24'0"	21848
		8.27	9850	8.35	9490	8.44	9130	8.56	8750	8.64	8430	8.91	7920
		27'1"	21716	27'4"	20922	27'8"	20128	28'1"	19290	28'4"	18585	29'2"	17460
				10.04	7920	10.13	7580	10.25	7240	10.33	6930	10.60	6490
				32'11"	17461	33'3"	16711	33'7"	15961	33'11"	15278	34'9"	14308
						11.87	6480	12.00	6150	12.07	5850	12.34	5450
						39'0"	14286	39'4"	13560	39'7"	12897	40'6"	12015
								13.80	5280	13.87	4990	14.14	4600
								45'3"	11640	45'6"	11001	46'5"	10141
										15.77	4280	16.04	3920
										51'9"	9436	52'8"	8642
												18.00	3420
												59'0"	7540

*Con gancio opzionale/*With optional hook/*Avec crochet en option/*Mit sonder hacken



E9		E11		E8F182		E8F183		E8F184		E8F185		E8F186	
m/ft	kg/lbs	m/ft	kg/lbs	m/ft	kg/lbs	m/ft	kg/lbs	m/ft	kg/lbs	m/ft	kg/lbs	m/ft	kg/lbs
4.20	17840	4.42	16750	7.92	8420	8.00	8040	8.09	7700	8.16	7370	8.21	7150
13'9"	39330	14'6"	36927	26'0"	18563	26'3"	17725	26'5"	16976	26'9"	16248	26'11"	15763
5.67	12920	5.89	12160	9.46	6810	9.54	6650	9.63	6490	9.69	6350	9.75	6240
18'7"	28484	19'4"	26808	31'0"	15013	31'4"	14661	31'7"	14308	31'9"	13999	32'0"	13757
7.21	9850	7.43	9260	11.06	5500	11.14	5350	11.23	5210	11.29	5090	11.35	4980
23'8"	21716	24'4"	20415	36'4"	12125	36'7"	11795	36'10"	11486	37'0"	11222	37'3"	10979
8.81	7810	9.03	7290	12.75	4500	12.83	4360	12.92	4220	12.98	4110	13.04	4010
28'11"	17218	29'7"	16072	41'10"	9921	40'7"	9612	42'4"	9304	42'7"	9061	42'9"	8840
10.50	6350	10.72	5880	14.49	3730	14.57	3600	14.66	3480	14.72	3370	14.78	3270
34'5"	13999	35'2"	12963	47'7"	8223	47'10"	7937	48'2"	7672	48'4"	7430	48'6"	7209
12.24	5290	12.46	4850	16.29	3080	16.37	2960	16.46	2830	16.52	2730	16.58	2640
40'2"	11662	40'11"	10692	53'6"	6790	53'9"	6526	54'0"	6239	54'2"	6019	54'5"	5820
14.04	4440	14.26	4010	18.19	2560	18.27	2430	18.36	2310	18.42	2210	18.48	2120
46'1"	9789	46'9"	8841	59'8"	5644	60'0"	5357	60'2"	5093	60'5"	4872	60'8"	4674
15.94	3740	16.16	3330	20.15	2155	20.23	2030	20.32	1920	20.38	1820	20.44	1730
52'4"	8425	53'0"	7341	66'2"	4762	66'5"	4475	66'8"	4233	66'10"	4012	67'1"	3814
17.90	3230	18.12	2830	21.61	1980	21.69	1860	21.78	1740	21.84	1640	21.90	1550
58'9"	7121	59'5"	6239	70'11"	4365	71'2"	4100	71'5"	3836	71'8"	3616	71'10"	3417
19.94	2840	20.16	2450	23.10	1830	23.18	1710	23.27	1600	23.33	1500	23.39	1410
65'5"	6261	66'2"	5401	75'10"	4034	76'1"	3770	76'4"	3527	76'7"	3307	76'9"	3109
		22.23	2170			24.83	1580	24.92	1470	24.98	1370	25.04	1280
		72'11"	4784			81'5"	3483	81'9"	3241	81'11"	3020	82'2"	2822
		24.30	1960					26.57	1360	26.63	1270	26.69	1180
		79'8"	4321					87'2"	2998	87'4"	2800	87'7"	2601
										28.39	1180	28.45	1090
										93'2"	2601	93'4"	2403
												30.18	1020
												99'0"	2249



CORMACH

Cormach s.r.l. - Via Madonnina, 27 - C.P. 199 - 25018 MONTICHIARI (BS) - ITALY
Tel. 0039.030.9656811 - Telefax 0039.030.9656846.7.8
E-mail: info@cormach.com - www.cormach.com

A fronte di una continua ricerca tecnologica i dati possono cambiare senza preavviso. Contattare il nostro Ufficio Commerciale per ulteriori informazioni.
Because of continuous technology research data can change without notice. Please, contact our Commercial Dept. for further information.
A cause de une continue recherche technologique les données peuvent changer sans preavis. Contacter notre Bureau Commercial pour des autres informations.
Irrtum und technische Änderung vorbehalten masse und gewichte unverbindlich. Unser Vertrieb erteilt Ihnen gerne weitere Auskünfte. Bitte rufen Sie uns an.
Debido a los continuos avances tecnológicos los datos pueden variar sin notificación previa. Para más información rogamos contacten nuestro Departamento Comercial.